



KAAVYA GOEL

Interior Architecture | Bachelor
Selected Works 2022 - 25

Cover Image: Original photograph by Kaavya Goel



KAAVYA GOEL

An emerging Interior Architect from Rhode Island School of Design with a focus on Adaptive Reuse and the transformation of existing structures. A strong foundation in woodworking and material exploration informs a hands-on, tactile approach to design. Passionate about inclusive design, spatial storytelling, sustainability, and the integration of contemporary design within historic contexts, with a deep curiosity about the evolving lives of buildings. Draws inspiration from local craftsmanship, architectural photography, and the dynamic relationship between form, function, and cultural narratives in the built environment.

Royal College of Arts, London [RCA]

goelkaavya.interiors@gmail.com | goelkaavya@gmail.com
+91 – 9999740303

<https://www.linkedin.com/in/kaavya-goel/>

EDUCATION

Royal College of Arts, London | 2026

MA Interior Design

Rhode Island School of Design | 2025

BFA Interior Architecture – Adaptive Reuse
Concentration in Nature, Culture,
Sustainability Studies (NCSS)

GPA: 3.8/4.0 • Honors Awardee

SKILLS

Softwares

Rhino V7, AutoCAD, Sketchup, Enscape, Adobe Creative Suite, Microsoft Office Suite, Blue-beam, Twin motion

Technical

3D Printing, Physical Model Making, Wood Machinery, Risograph printing, Laser cutting, Sewing

Creative

Space Planning, Concept Sketching, Prototyping, Mood boarding, Design Thinking, Collaging, Color Study

LEADERSHIP

Event Manager | 2021–present

South Asian Student Association

Co-President | 2021–2023

Architecture for All

Fashion and Modeling | 2019

Designed and modeled a dress

AWARDS

Editors Choice Award | Uni XYZ, USA | 2023

Community Design integrating living, working, and social space promoting health and connectivity.

National Art Award | Srijanyam Art and Design Fest, India | 2018

Designed a Bluetooth – connected lamp blending technology with interactive design.

PROFESSIONAL EXPERIENCE

Interior Design Intern | Wyndham Hotels & Resorts | June – Aug ‘24

As the only interior design intern selected, i designed a welcoming and functional lobby for the upcoming Extended Stay, conceptualizing and executing design plans, selecting materials and furnishings, and ensuring alignment with brand standards. Additionally, my team won first prize and 30,000 Wyndham reward points for our presentation on increasing ancillary revenue.

Strengths : Sketchup, AutoCAD, Design Thinking, Material Selection

Exhibition Designer | Little Compton Historical Society | Feb – July ‘24

Crafted a display of the town’s transportation history, overcoming space and lighting challenges. I designed the layout, created content plans, and ensured cohesive visual storytelling as an interior and graphic designer.

Strengths : Spatial Planning, Content Development, Graphic Design

Furniture Design Intern | Sita Nanda | June – Jul ‘23

Gained proficiency in wood polishing, including staining and varnishing, to enhance the aesthetics of wood. Refined my skills in restoring and preserving wood surfaces.

Strengths : Wood Working, Varnishing, Restoring Wood

Textiles Intern | Shades of India | Jul – Aug ‘23

Crafted duvet covers, gained in-depth knowledge of fabric selection, pattern design, and sewing techniques, understanding quality control and production processes.

Strengths : Fabric Selection, Sewing, Pattern Design

Architecture Intern | LTDF | June – Aug ‘22

Contributed to project teams with preparation of construction drawings, space planning and specifying furniture and finishes. Managed architecture design library.

Strengths : AutoCAD, Spatial Programming, Furniture Planning

Interior Design Intern | Studio DRA | Jan – Aug ‘21

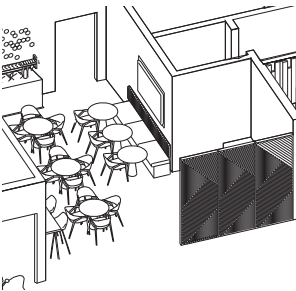
Contributed in multiple phases of design on hospitality and residential projects with a focus on schematic design, product sourcing, and design documentation. Accompanied supervisors to client meetings and site visits, documenting and measuring client spaces

Strengths : Concept Sketching, AutoCAD, Design Thinking

CONTENTS

Professional Practice — Academic Projects at RISD — Adaptive Reuse | Interiors — Furniture | Miscellaneous

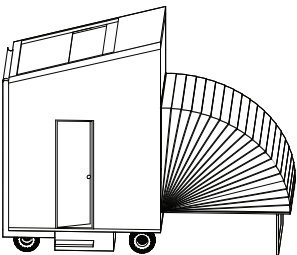
01



Sophisticated Serenity

Summer Internship
Lobby Design of a Hotel

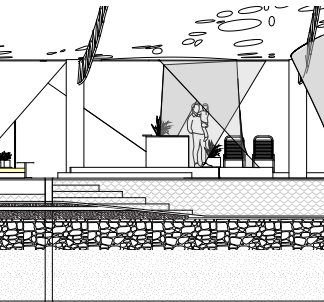
02



Working Residence

Housing for Street Vendors
Efficient Food Cart Design

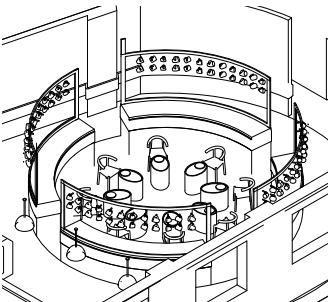
03



Punte Azul

Shoreline-Inspired Natatorium
Design for the Community
echoing coastal logic

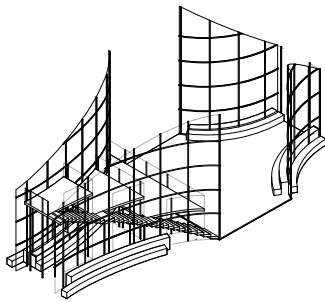
04



Sculpting by Touch

Pottery Workshop Design
Design for the Visually Impaired

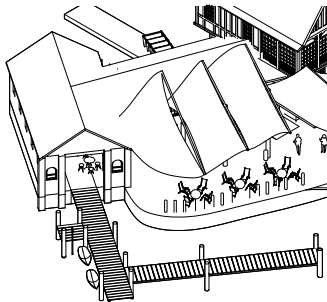
05



Floating Grid

Indoor Pavilion
A play between Structure,
Transparency and Opacity

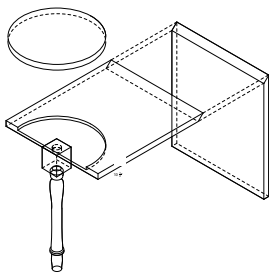
06



Boathouse Cafe

Cafe Design
A Sustainable Concept with
Nautical Elements

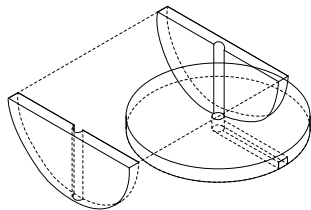
07



Luminous Flow

Furniture Design –Veneer
Interplay of Light
and Form

08



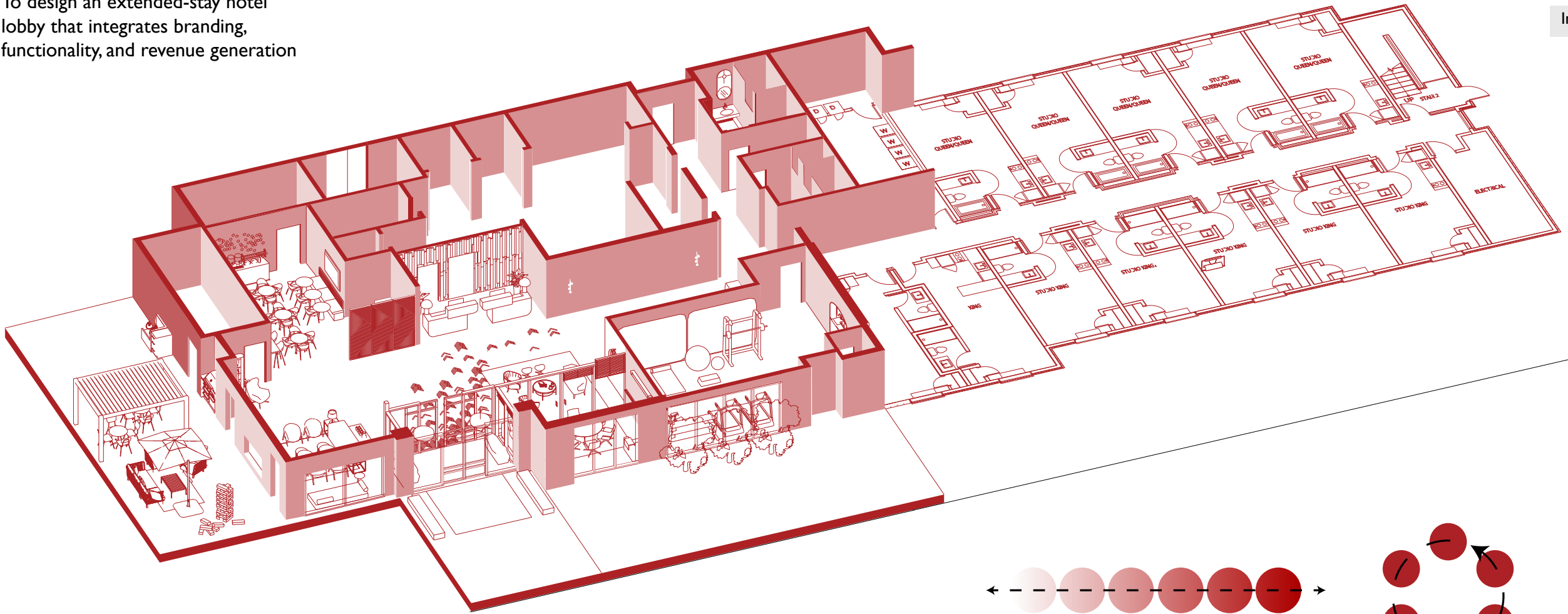
Crafted Contrasts

Furniture Design –Veneer
Side Table embodying Clash
of Cultures

SOPHISTICATED SERENITY

Wyndham Hotels and Resorts Internship 2024 Summer | Supervisor Kangana Bhanti

To design an extended-stay hotel lobby that integrates branding, functionality, and revenue generation

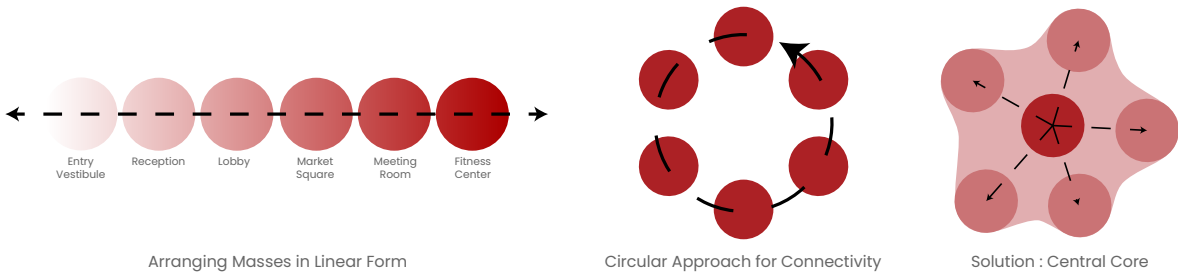


As part of my internship at Wyndham, I undertook this independent project, designing the lobby for an economy-scale extended-stay hotel. The space blends sophisticated aesthetics, comfort, and functionality, with vibrant red accents inspired by one of Wyndham’s hotel brands, I was designing for a cohesive, welcoming atmosphere.

A key challenge was generating ancillary revenue, which I addressed by introducing a Market Square concept featuring No-Brick vending, allowing for flexible retail opportunities without the need for permanent store spaces. The project is currently under construction.

Strengths: Rhino, Enscape, AutoCAD, Adobe Illustrator, Adobe Photoshop, Spatial Planning, Branding Integration, and Revenue-Driven Design, Presentation Skills

Interactive | Flexible | Color Accent



Circulation Studies

The design evolved on circulation efficiency with studies that started from a linear progression, leading to excessive movement. The final design shifted to the Lobby as a central space, resulting in efficient circulation and maximizing revenue generation. This approach encourages visitor exploration in all directions, ensuring access to key areas like the market square and engaging them throughout the space.

PLAN & FLOORING MATERIALS

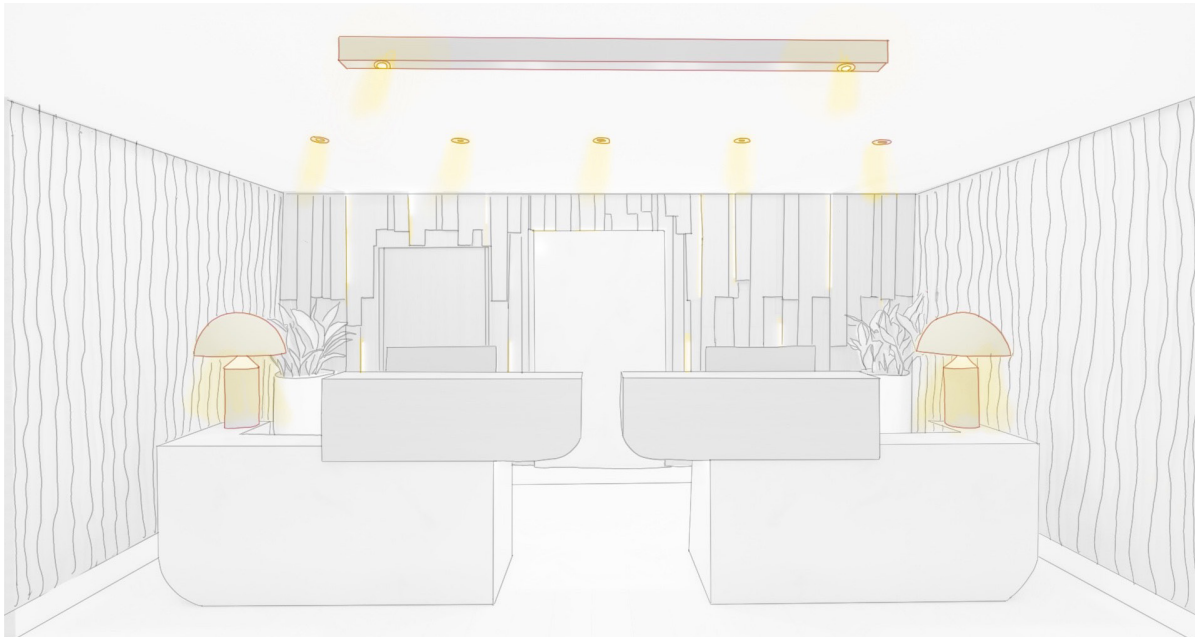


LIGHTING DESIGN

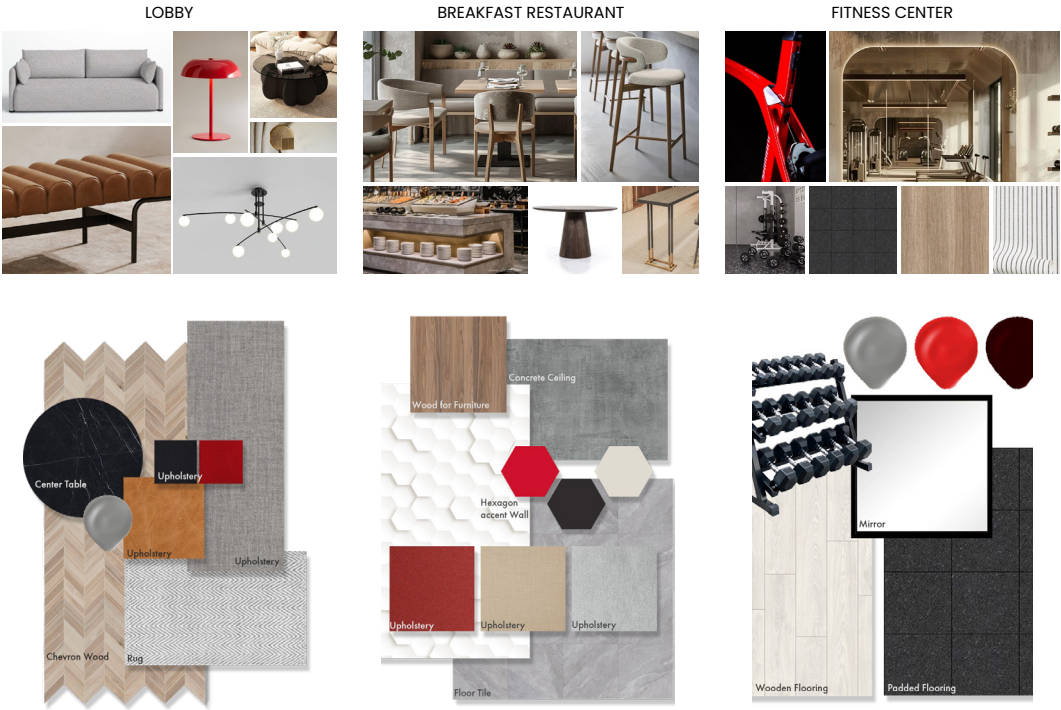


- RCP - Reflected Ceiling Plan
- 1. 25w COB Concealed Down light T-24
 - 2. 12-Watt Round Astra Spot Recessed COB Spot Light
 - 3. 40w COB Concealed Down light T-24
 - 4. CL Recessed Slot Linear - 4' lengths

- LIGHT SOURCING
- 1. Entry Vestibule
 - 2. Reception Desk
 - 3. Meeting Room Light
 - 4. Lobby Seating
 - 5. Lobby Ceiling Light
 - 6. Breakfast Ceiling Light



MATERIALS AND FINAL RENDERS



Material Choices
The design was shaped by Wyndham's core ethos, blending sophistication with warmth. I carefully chose a color palette of red, gray, and white to reflect the brand's identity while creating a refined yet inviting atmosphere. Timber and wooden elements add natural texture, while carpeted floors enhance comfort and acoustics.



LOBBY – Bridging private and public spaces with warm lighting and versatile seating

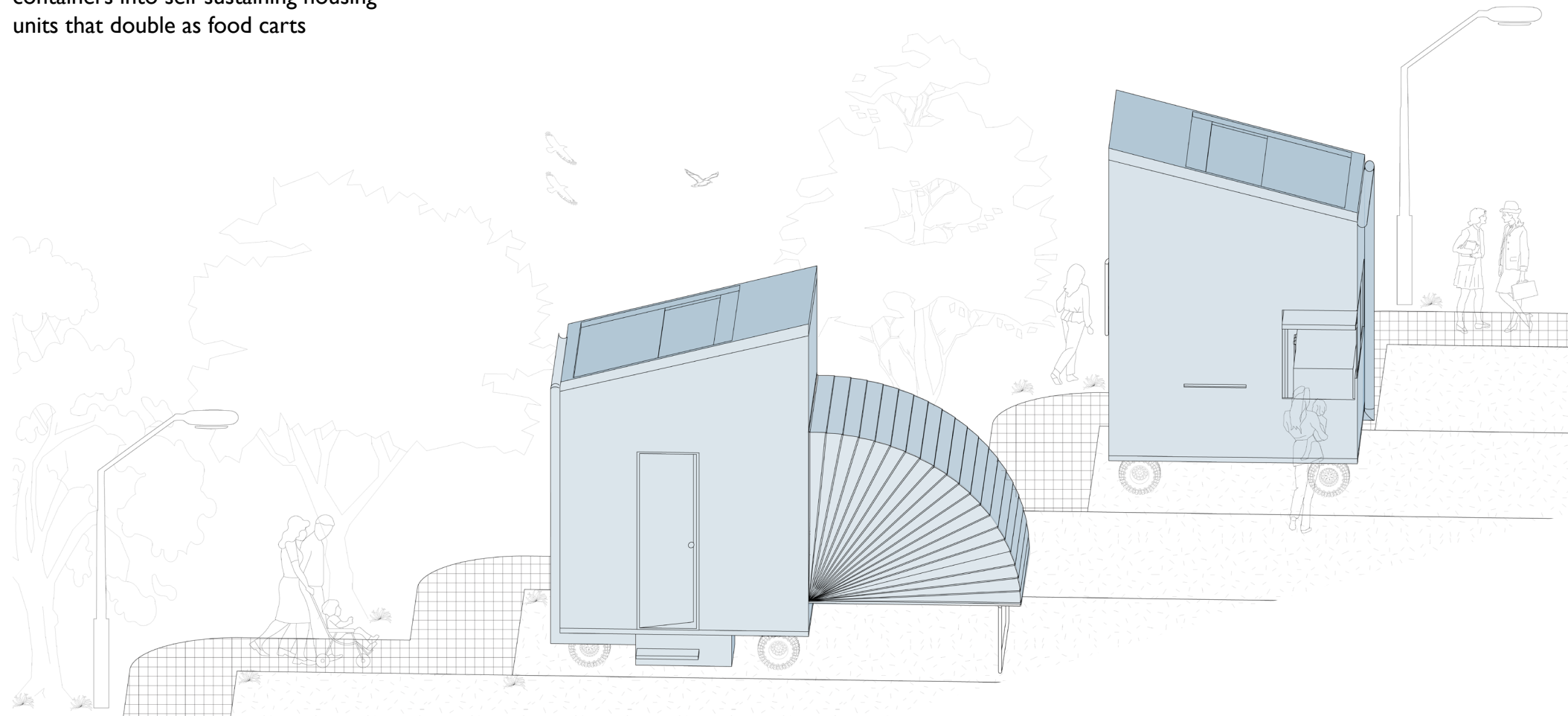


FLEX MEETING ROOM + MARKET SPACE – Dynamic and adaptable space that can be adjusted



FITNESS CENTER – Energizing space with rubber and wood flooring for multiple workouts

To re-purpose waste metal containers into self-sustaining housing units that double as food carts



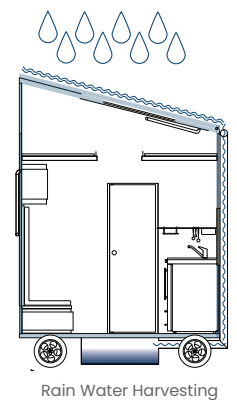
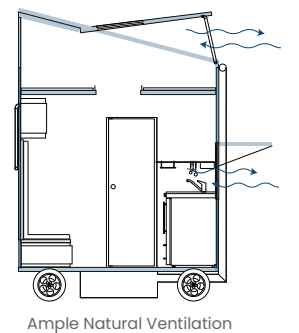
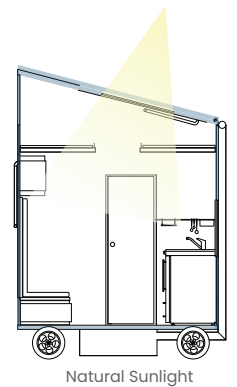
One of my most impactful individual projects addresses both housing instability and economic sustainability for street food vendors in India. Using a discarded metal container, I transformed waste into a multi-functional unit that serves as both a living space and a food cart. This adaptive reuse approach not only reduces urban waste but also provides a practical solution for vendors who often lack stable housing. Designed for self-sufficiency, the unit incorporates solar panels for energy and a rainwater harvesting system, ensuring minimal reliance on external resources. By integrating sustainable design with economic empowerment, this project re-imagines urban resilience, offering a scalable model for adaptable, low-cost housing.

Strengths: Rhino, Enscape, AutoCAD, Adobe Illustrator, Adobe Photoshop, Spatial Planning, Sustainability, Self-Sufficiency, Economic Empowerment, Compact Design, Scalability

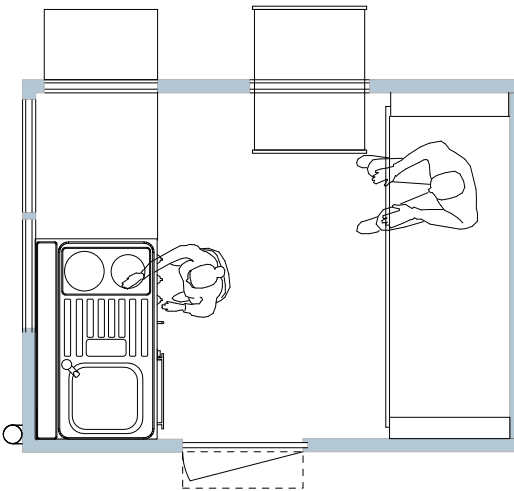
WHY combine living and working space?

v

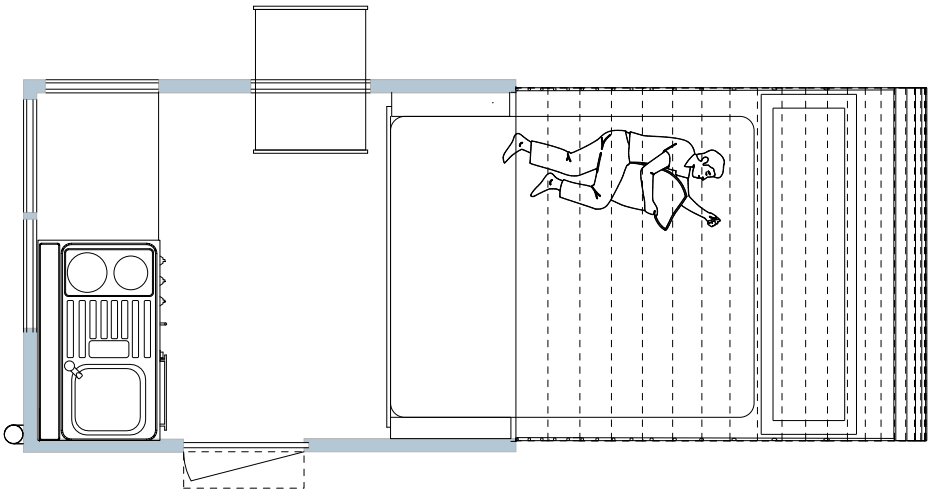
Sustainable | Renewable Energy | Social Impact Design



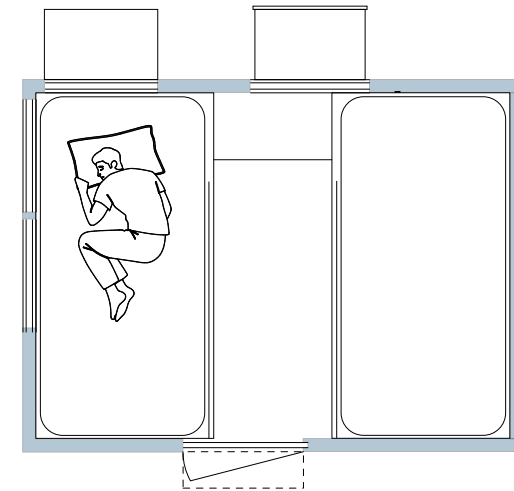
ARCHITECTURAL DRAWINGS



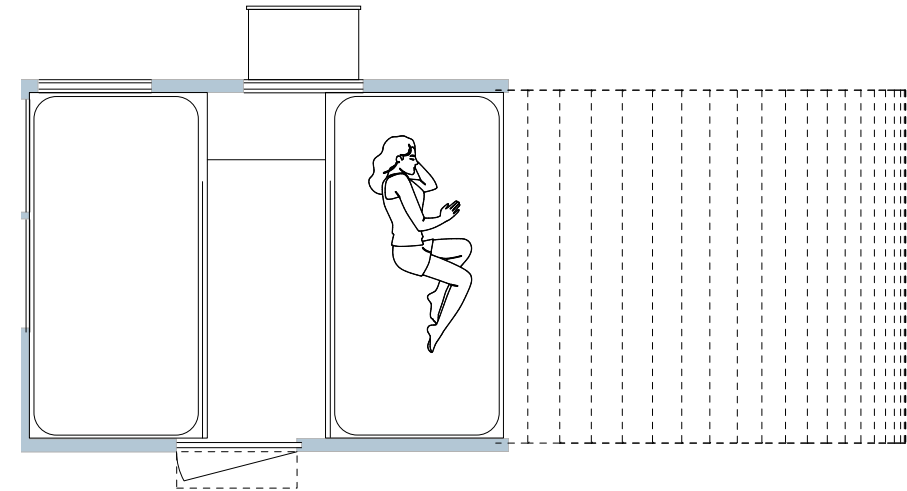
First floor with sofa seating



First floor with Bed



Second floor with sofa seating

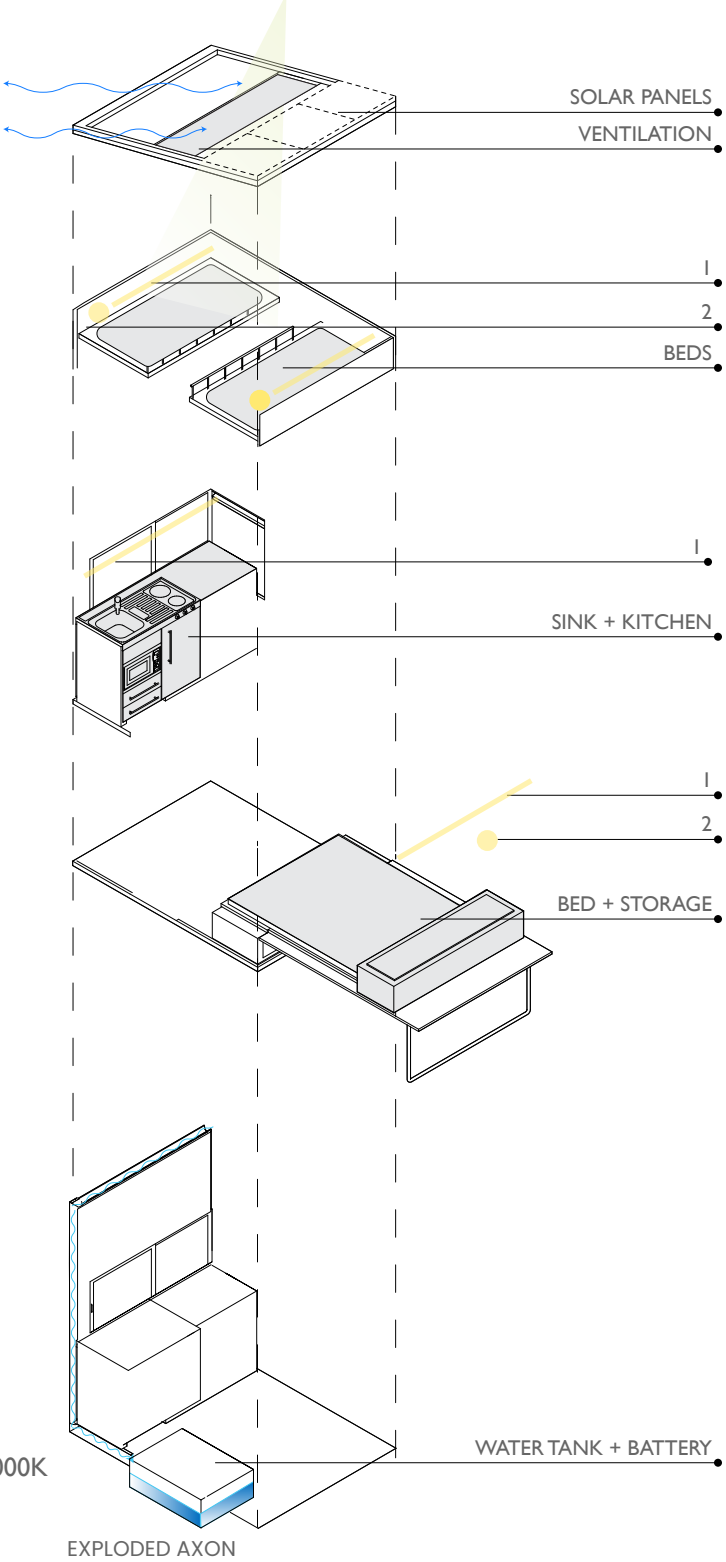


Second floor with Bed

10' 8"

16' 8"

PLANS



LIGHT STUDIES

- 1. XOO LINE HYDRA PRO IP40 LED LINEAR surface - mounted led luminaire with low opal cover, 2700K
- 2. KANLUX TONIL LED W wall - mounted led luminaire with flexible arm, 3000K

SECTIONS

I designed this cart to be efficient and functional. The kitchen doubles as a serving station, with two large windows for taking and handing out orders, making it easy for vendors to work. Inside, a sofa near the entrance expands into a bed, while two smaller beds above accommodate children. When fully opened, the cart fits perfectly within a standard parking lot, making it ideal for both vending and living (fig. 3).

Sustainability was a key focus. The openable ceiling allows for natural ventilation, reducing the need for artificial cooling (fig. 2). Every element is designed to be compact and adaptable, ensuring the space feels functional yet comfortable. To take advantage of the sloped ceiling, I integrated a pipe running through its corner, connected to a water tank beneath the cart, ensuring a steady water supply for the kitchen.

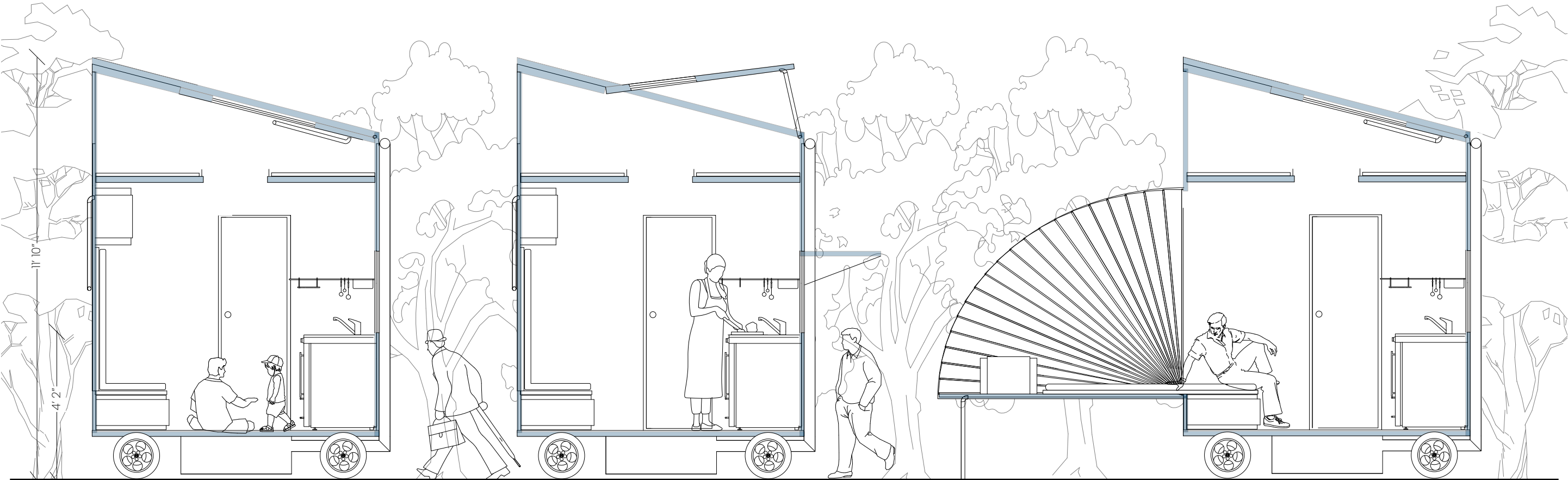


Fig. 1 - Compact Version

Fig. 2 - Openable Roof for Ventilation

Fig. 3 - Expandable Bed

Vision:
As a next step, I aim to collaborate with the Indian government and local bodies to scale this concept into a viable solution for street vendors across the country. By working with policymakers and urban planners, I hope to scale up the manufacturing of these units ensuring they are accessible, affordable, and responsive to the needs of vendors. This project is not just about design—it's about creating real, lasting impact by providing dignified, self-sufficient living and working spaces for those who need them the most.



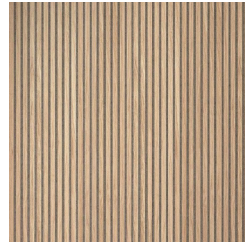
Wood Wool



Metal Panels



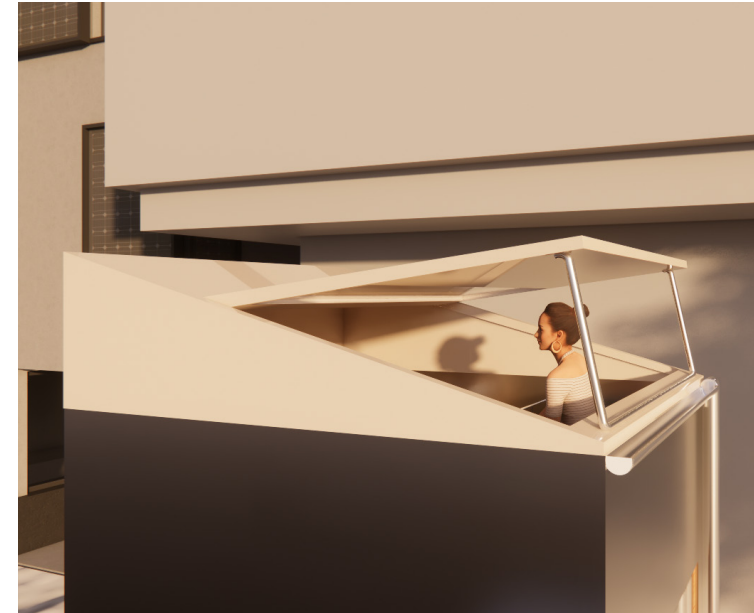
Plywood



Wood Planks



Exterior View of Cart in Parking Lot at Night



Open-able Roof for Light and Ventilation



Expandable Fabric Structure for Bed



Kitchen and Workspace Along with a View of the bed on the Top for younger adults

To transform Rhode Island’s coastal identity into a safe, multi-generational natatorium for recreation, therapy, and drowning prevention through thoughtful architectural design.

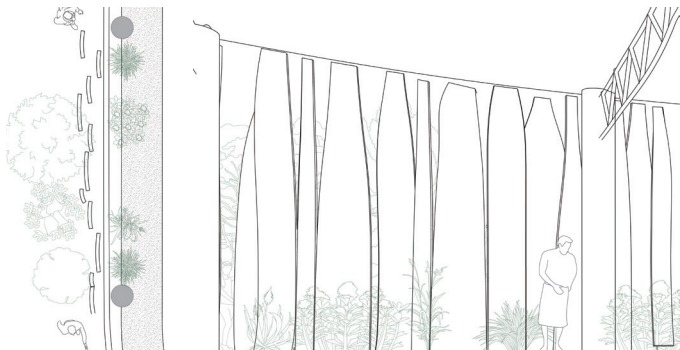
Natatorium is a multi-generational center that transforms Rhode Island’s maritime identity into an educational spatial experience. Inspired by the state’s coastal topography and longstanding relationship with the ocean, the project weaves together therapeutic, recreational, and instructional water zones across the interior landscape.

The natatorium addresses Rhode Island’s disproportionately high drowning rates—particularly among underserved communities—by integrating water safety into the architecture itself. Gradual depth transitions, visual clarity, and embedded learning zones offer a safe and empowering environment where familiarity with water becomes second nature.

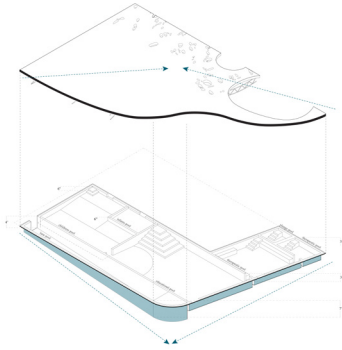
The project also incooperates accessibility to water as a fundamental right—creating inclusive opportunities for healing, and recreation.

Through its curved walls, filtered daylight, and adaptive reuse of an existing site on Broad Street, Natatorium becomes not just a swimming facility, but a space of care, prevention, and connection.

Strengths: Rhino, Enscape, AutoCAD, Adobe Illustrator, Adobe Photoshop, Spatial Planning, Sustainability, User-Centered Design, Material Exploration



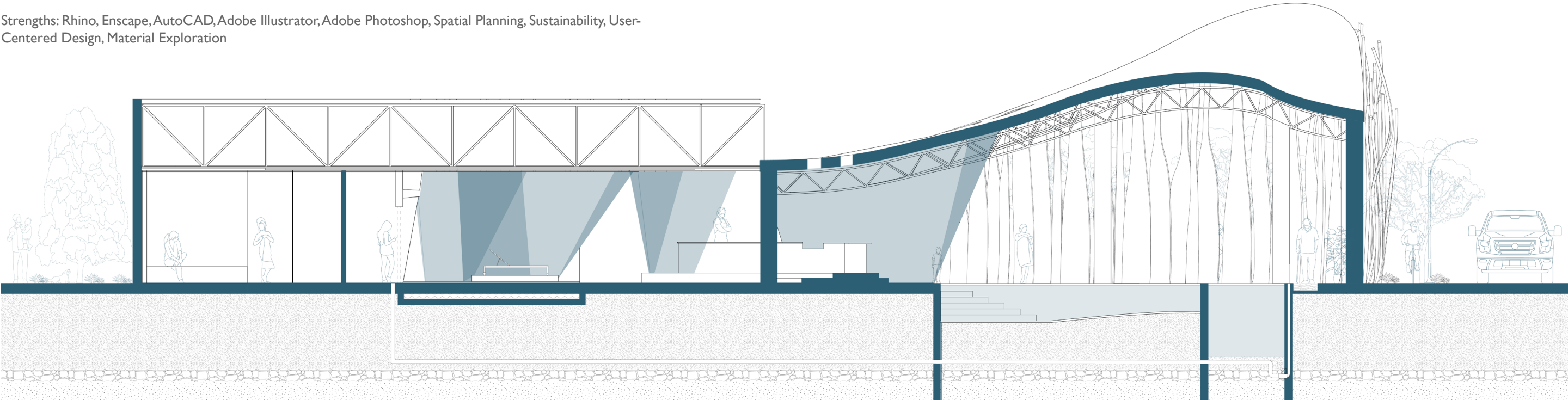
Plan and Section View to show Layering for Light and Privacy



Pool and Roof Relation

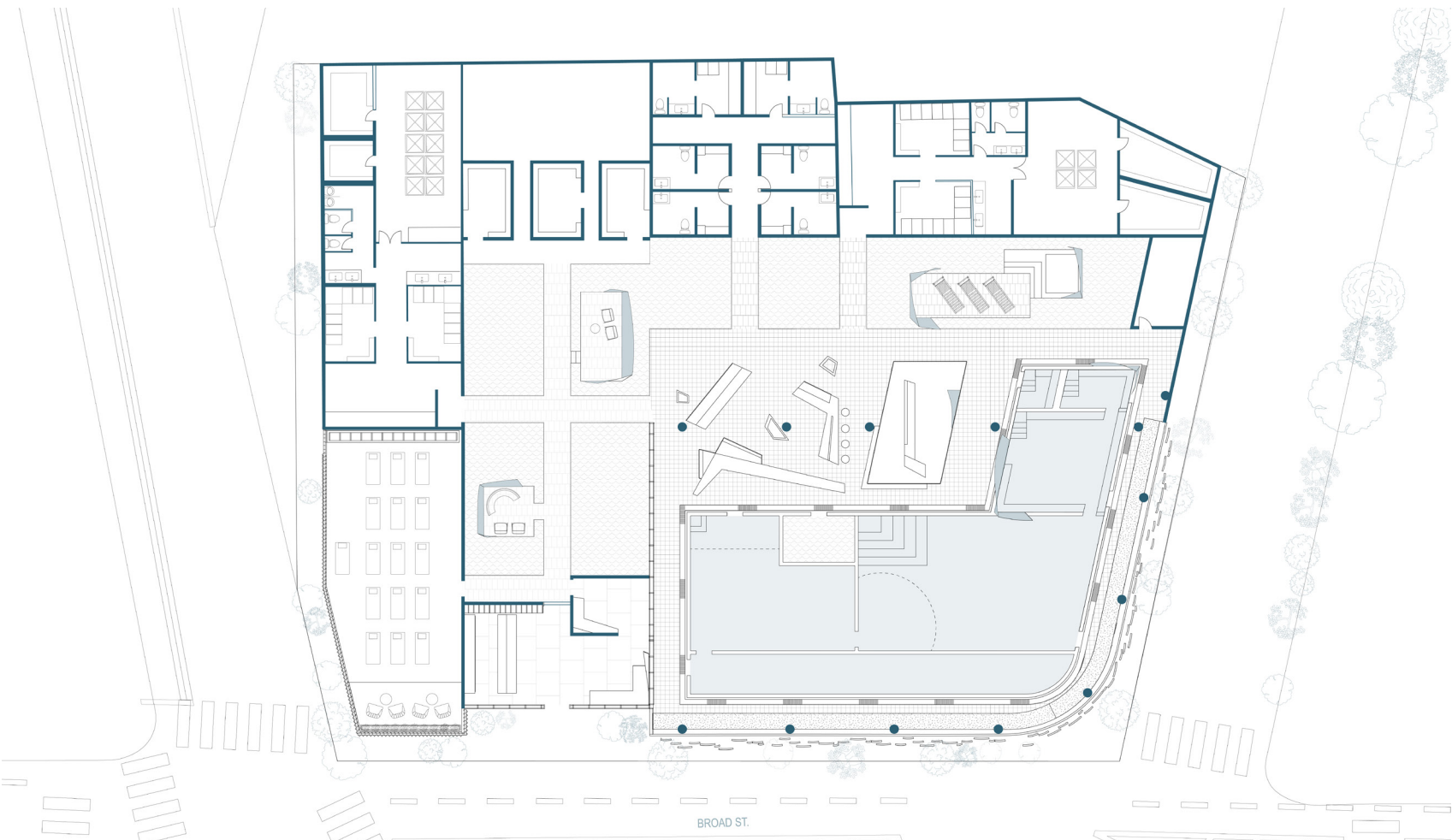


Circulation



Cross Section

WATER INFORMED PATHWAYS



Plan



Trail



Pond



Shoreline

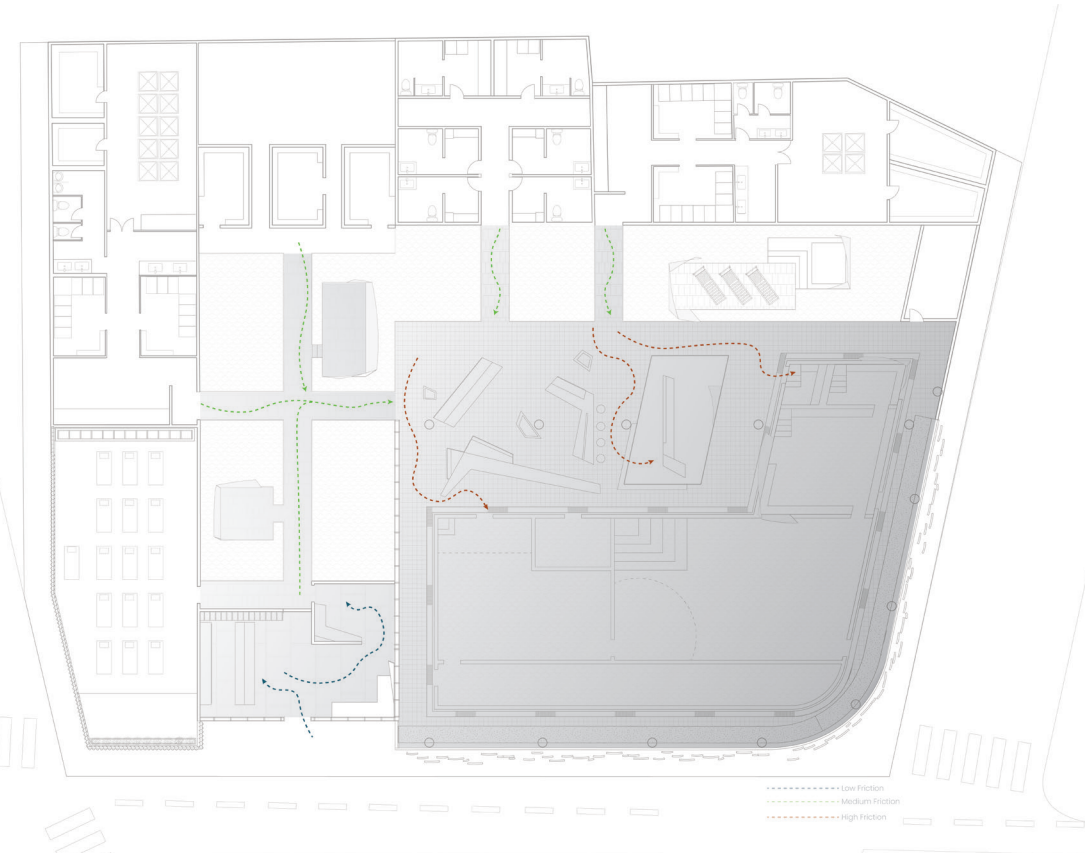


Ocean

The circulation and water distribution strategy in the Natatorium takes direct inspiration from the natural systems of Rhode Island’s coastal landscape—its shorelines, ponds, trails, and estuarine flows. Just as water meanders through inlets and around landforms, the design encourages fluid movement through pathways and gently defined zones.

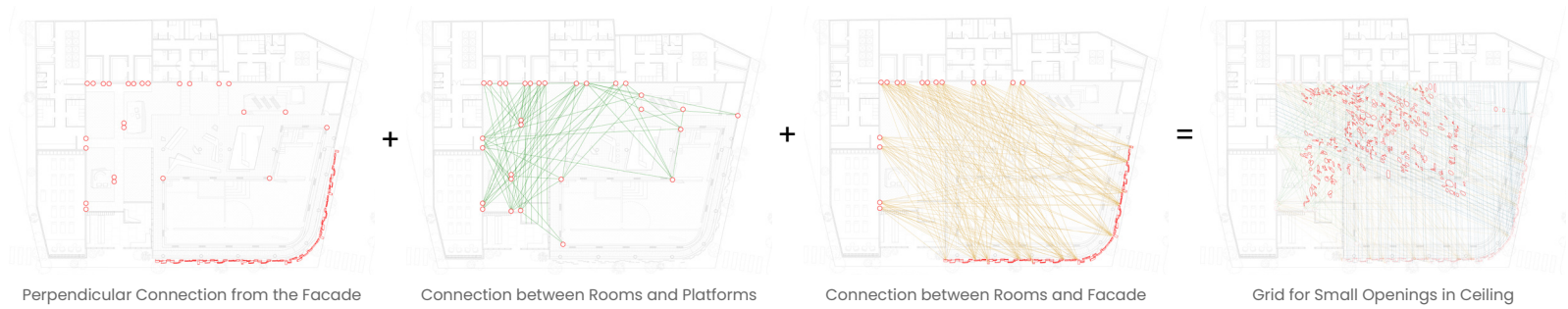
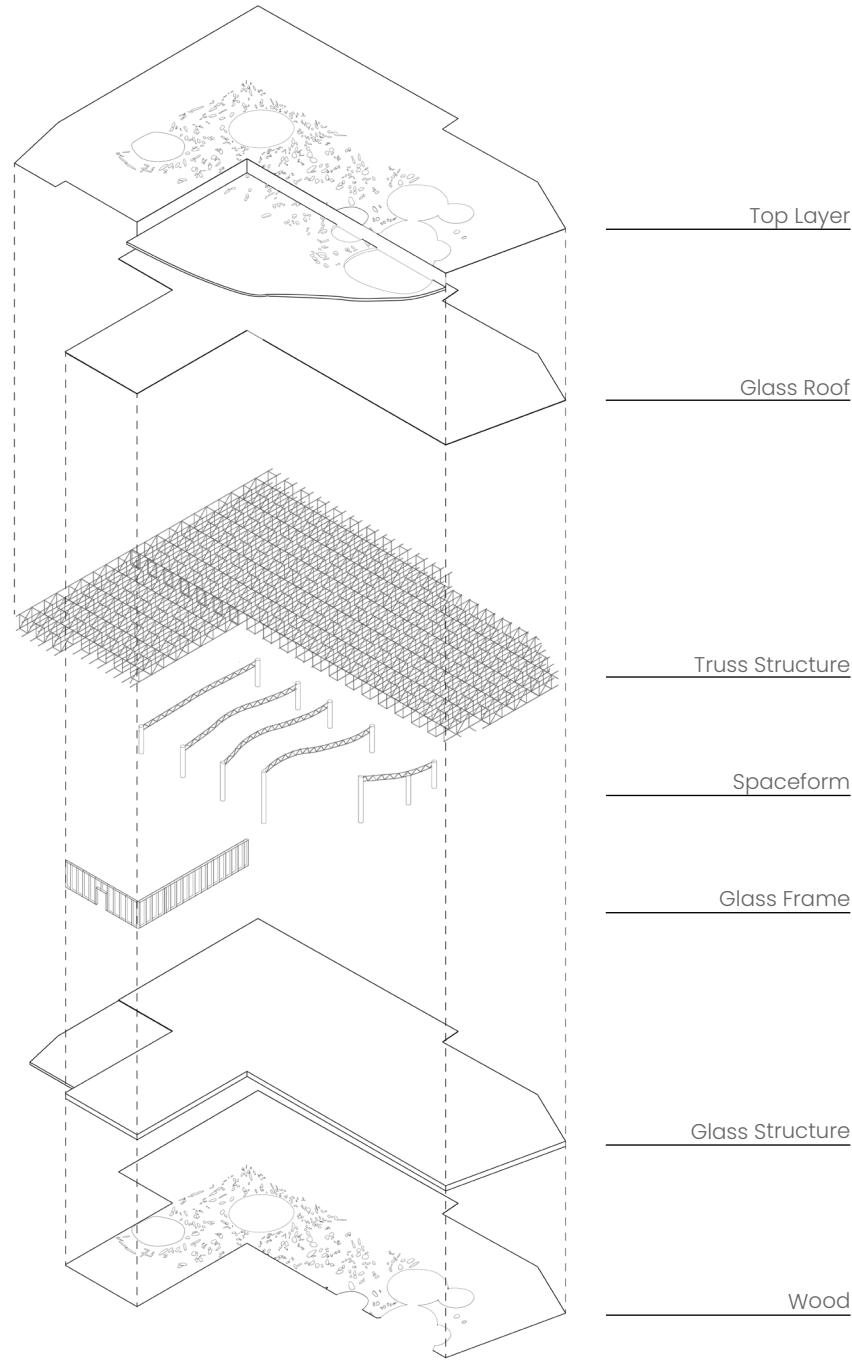
The layout reflects the logic of coastal hydrology, where main swimming pools act as central water bodies, much like the ocean, and are connected by narrower circulation paths that resemble trails along with ponds. These guide users from changing areas to wading zones, and main pools, echoing the way natural trails connect Rhode Island’s diverse water bodies.

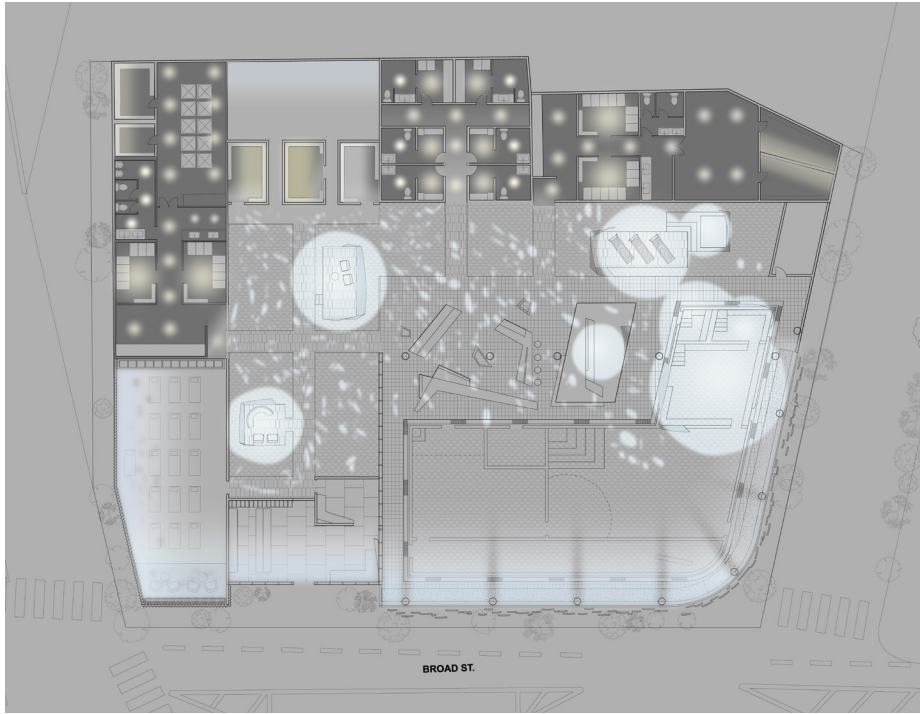
To enhance both safety and experiential depth, the flooring tiles subtly shift in both size and color as users move closer to wetter zones. Tiles become smaller and darker near the pool edges and shower areas—strategically designed to increase surface friction and reduce slipping hazards, while also visually cueing a transition from dry to wet environments. This material gradient not only serves a functional purpose but deepens the metaphor of moving from land to water, solidifying the natatorium as a microcosm of Rhode Island’s shoreline ecology.



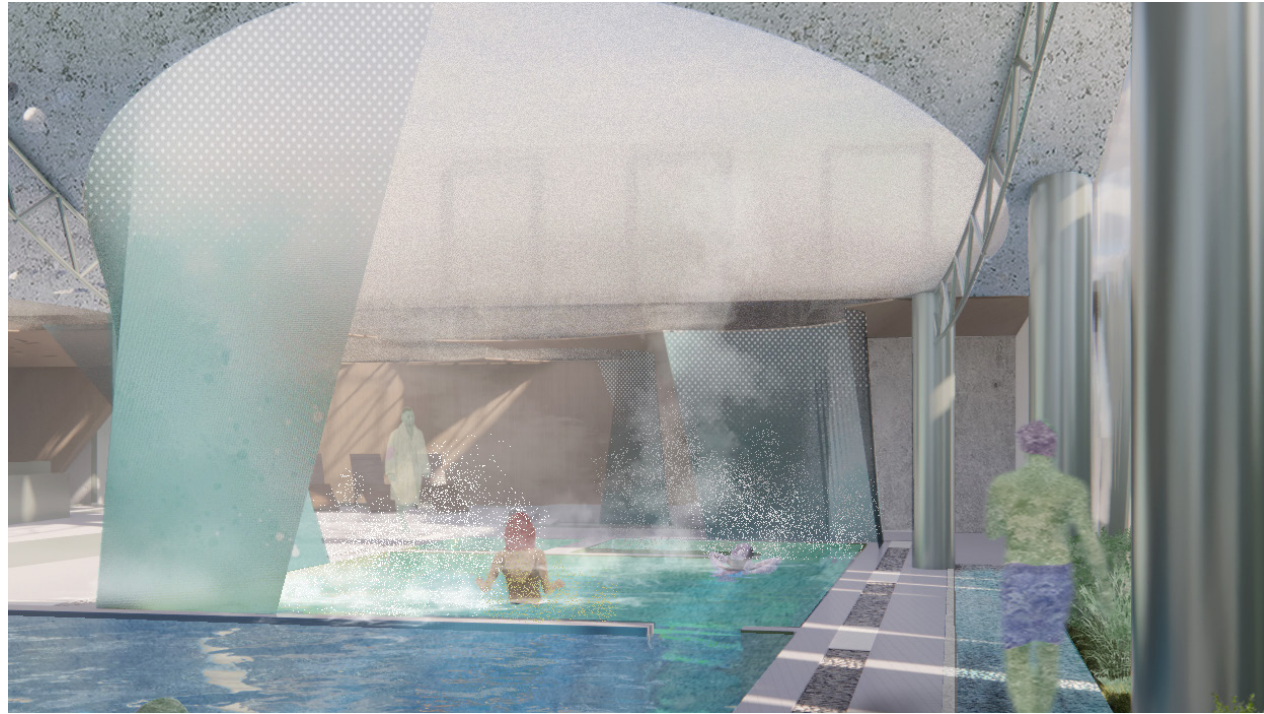
Circulation Diagram

ROOF STRUCTURE

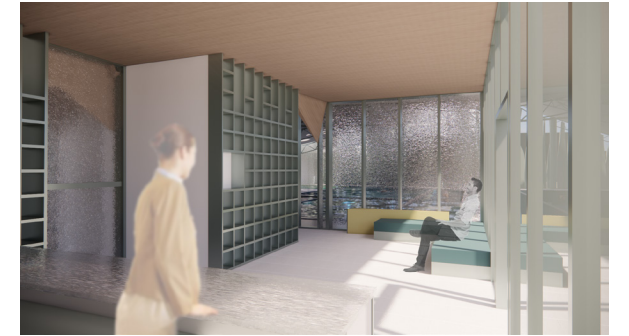




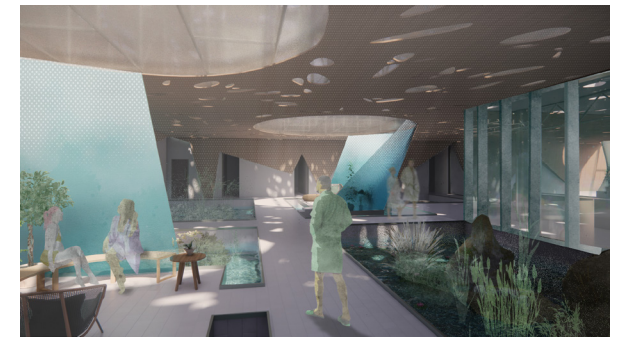
Day : Natural Light



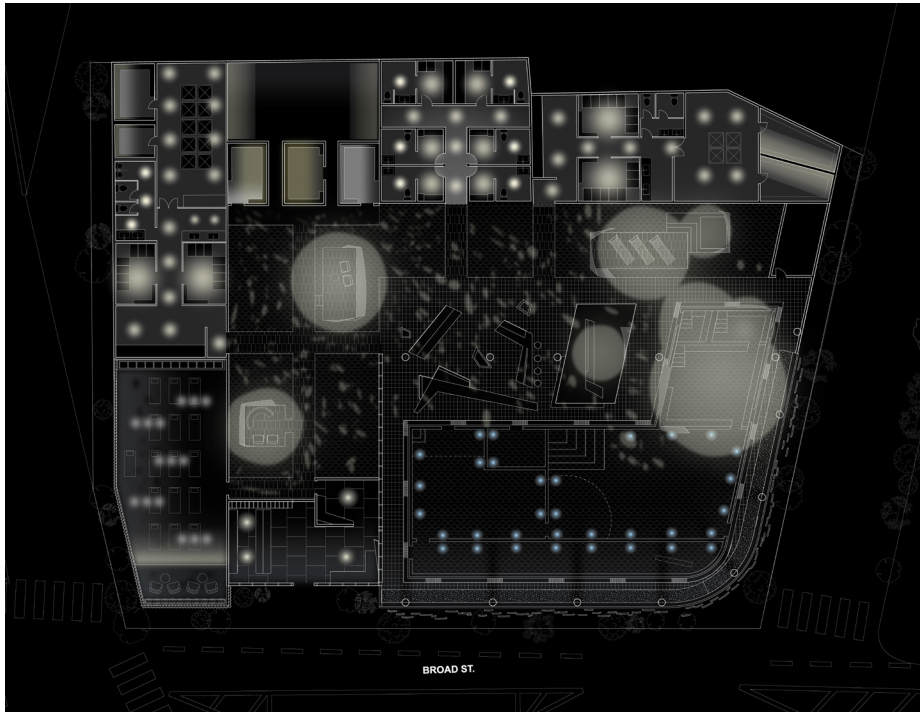
Light Filters in Through the Openings in the Ceiling to make it feel like a Canopy



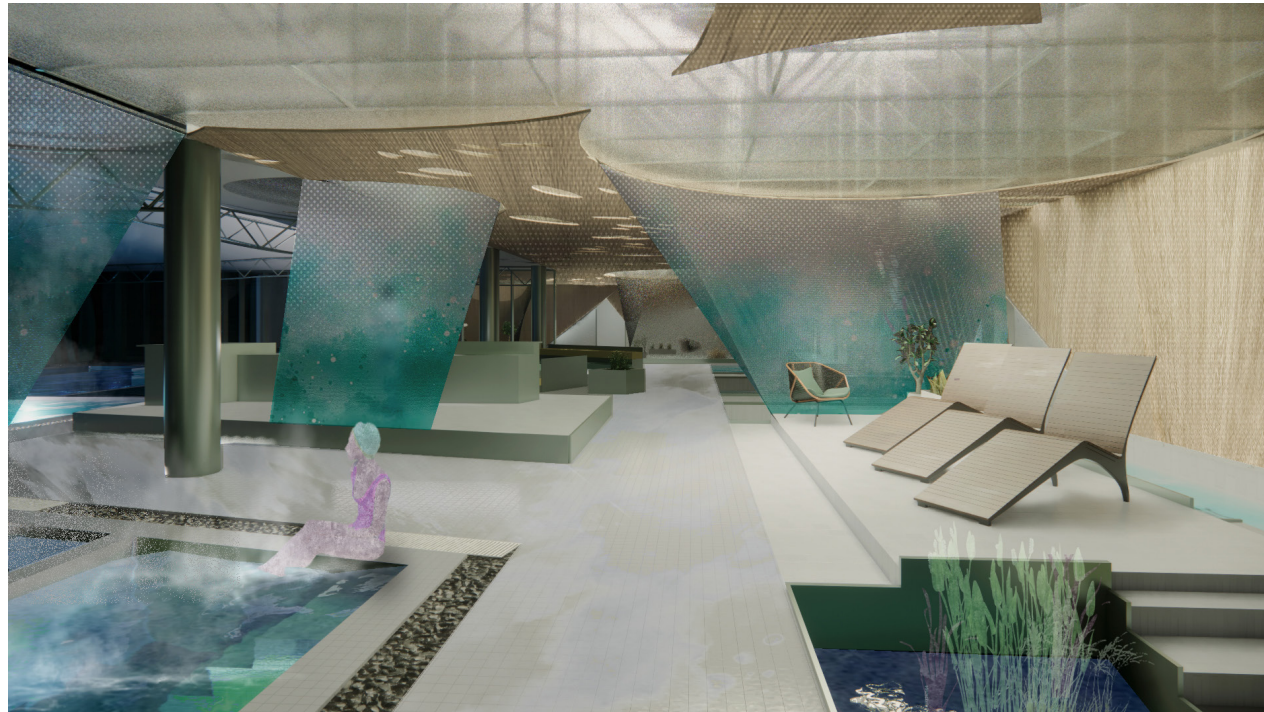
Reception + Seating



Pathways + Seating Nooks



Night : Artificial Light



At night, Artificial Light tries to mimic the same feeling



Recreational Room

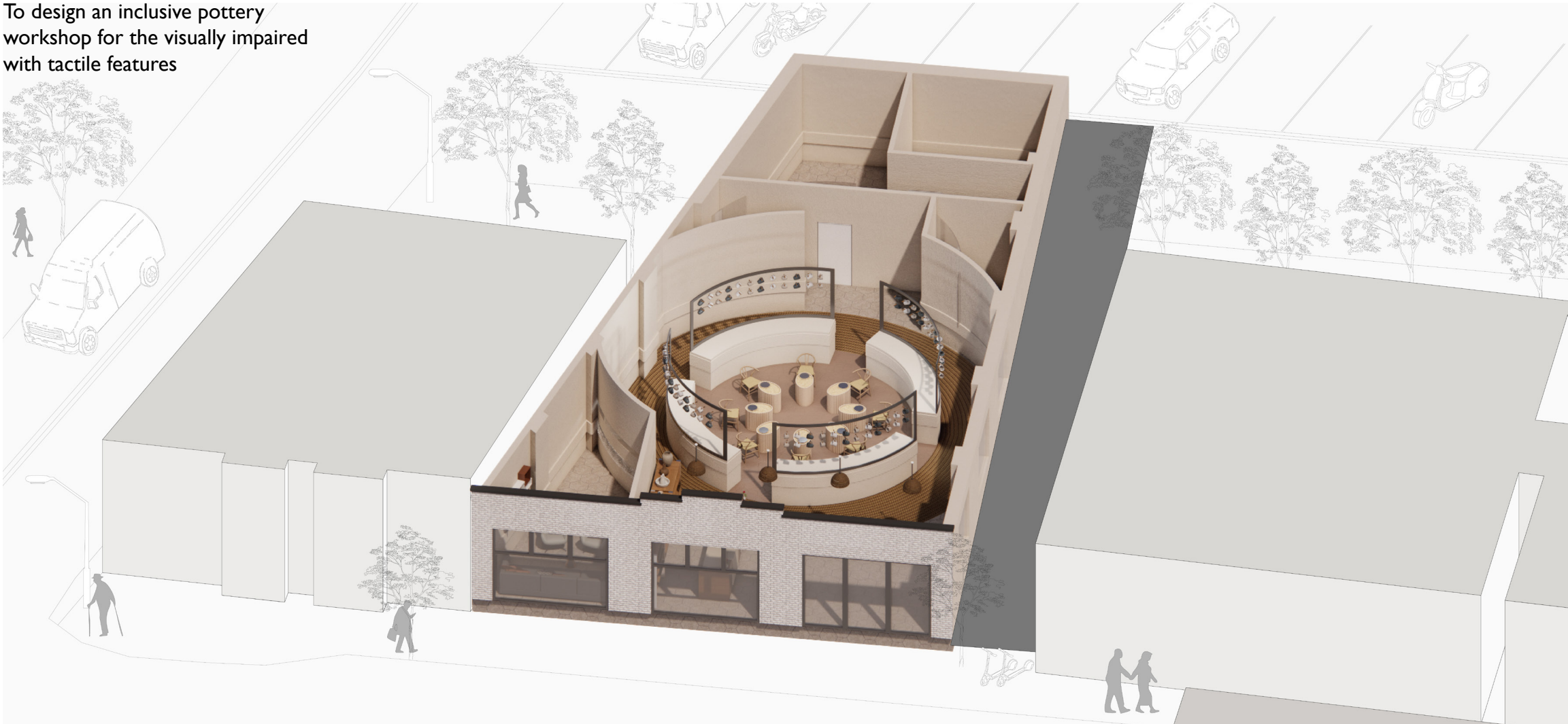


Bar + Seating along the Pool

SCULPTING BY TOUCH

Rhode Island School of Design 2022 Fall | Introduction to Interior Design I | Instructor Patricia Roka

To design an inclusive pottery workshop for the visually impaired with tactile features

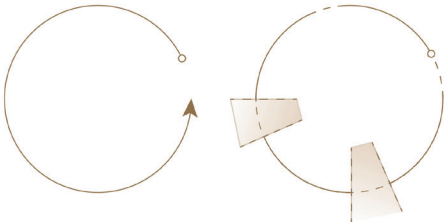


This independent project, is my first interior architecture project and closest to my heart as it started as a functional design motto. It explores pottery as an inclusive and therapeutic medium for the visually impaired, where touch is the primary tool for both navigation and creation, to enhance their experience. As a tactile art form, pottery enhances sensory engagement, fine motor skills, and spatial awareness, making it an ideal and empowering activity.

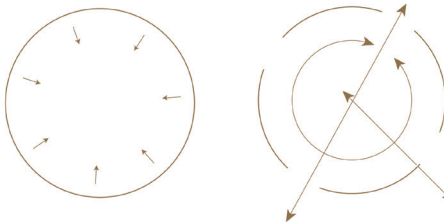
The minimalist yet warm interior features an all-white palette with wooden paneling and beige tones, fostering a calm atmosphere. To ensure inclusivity, I designed textured plaster walls as tactile guides—smooth for circulation, rough for workspaces, and ridged for key touch points—enabling intuitive navigation and spatial awareness. Through this project, I was able to channel my passion for interior design into creating a meaningful, accessible space for the betterment of society.

Strengths: Rhino, Enscape, AutoCAD, Adobe Illustrator, Adobe Photoshop, Spatial Planning, Inclusive Design, and Material Studies

Inclusive | Interactive | Sensory | Warm



Circular Programming Open to View and Enter



Inward Intimate Space Access and Circulation

Initial Circulation Studies

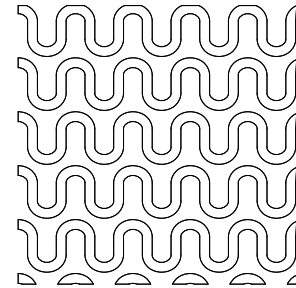
For the visually impaired pottery workshop, I designed circular circulation for easy navigation, added glass panels above 30" for visibility, and included multiple access points for convenience.



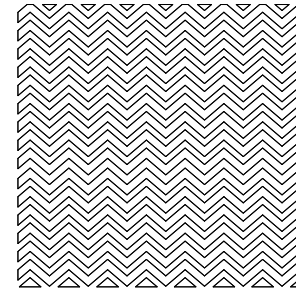
3D Printed Plan for Flooring

I 3D-printed the floor plan to physically test how different flooring textures could guide navigation. Running my fingers over the model, I could feel how subtle changes in texture would help users distinguish between key areas. At the site, this thought will be realized by having smooth material like carpet for circulation and natural stone in the pottery zone.

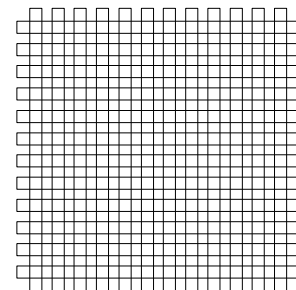
This hands-on process made the design feel more real, allowing me to refine how the flooring would work in practice. It wasn't just about planning a space; it was about making sure every detail supported independence and ease of movement.



Hexagon Tiles



Stone



Soft Rug

Flooring Materials

I carefully incorporated 3 flooring types to aid navigation and enhance the sensory experience, for the visually impaired, who often rely on floor texture to orient themselves. At the entrance, hexagon tiles signal arrival, marking the transition into the space. Around the pottery workspace, an inlay circular rug softens the floor, intuitively guiding movement and enhancing circulation flow. In the pottery area itself, I chose stone for its natural, grounding feel and a sensory connection to the materiality of the craft.

SECTION AND WALL MATERIALS

I wanted the walls to do more than just divide the space—they needed to guide people. I was passionate about preserving the existing plaster walls, so instead of replacing them, I restored them and integrated a tactile element to enhance navigation. A textured band between 24” and 40” in height was added, allowing visually impaired users to navigate the space by touch.

Each area—the common spaces, circulation zones, and pottery wheel section—features a unique plaster finish, from skip trowel to striated textures, making movement intuitive. This design wasn’t just about looks—it was about creating a space that people could experience through touch.



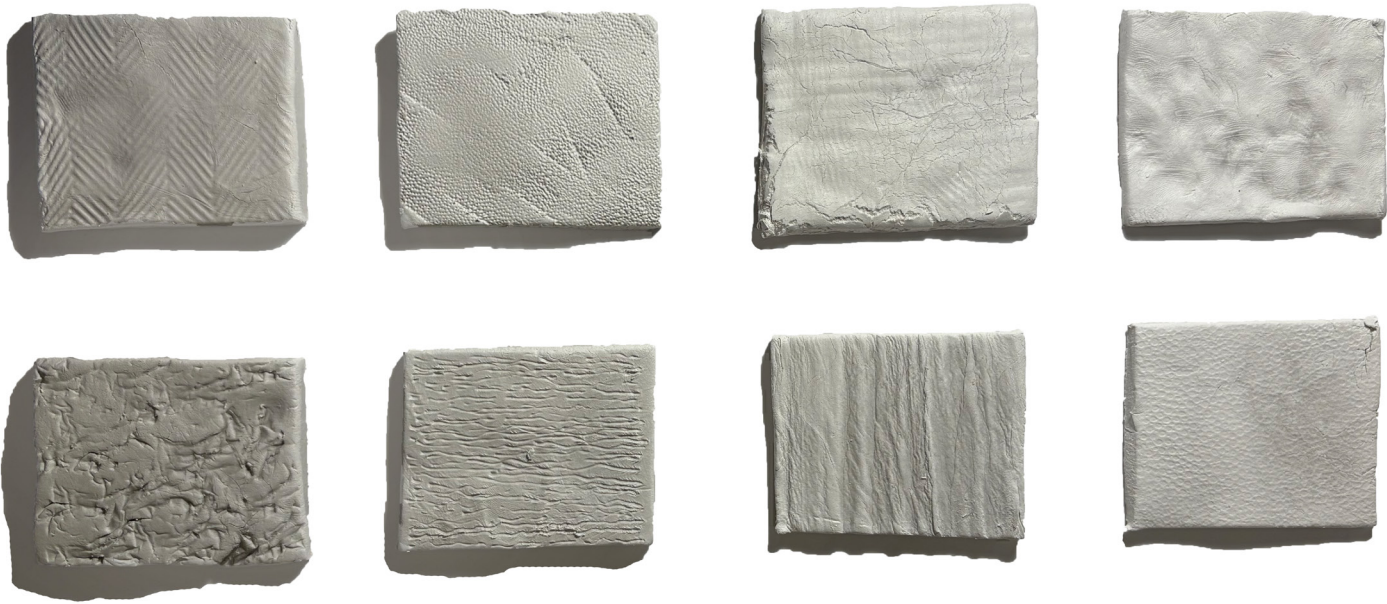
Skip Towel Plaster Texture
Applied in the wheel-throwing area to create a subtly uneven surface, fostering a dynamic and creative workspace.



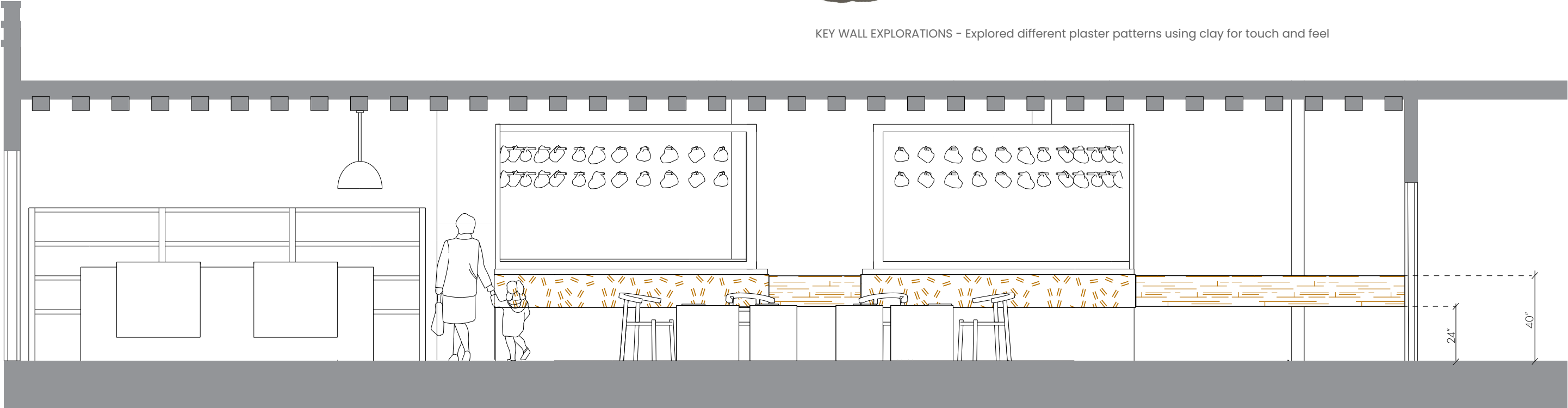
Striated Plaster
Used at waist level along walking paths to create a linear flow that helps guides users intuitively.



Venetian Plaster
Applied in common areas such as seating spaces and washrooms, to create a refined finish minimizing distractions



KEY WALL EXPLORATIONS – Explored different plaster patterns using clay for touch and feel



SECTION



Acoustics:

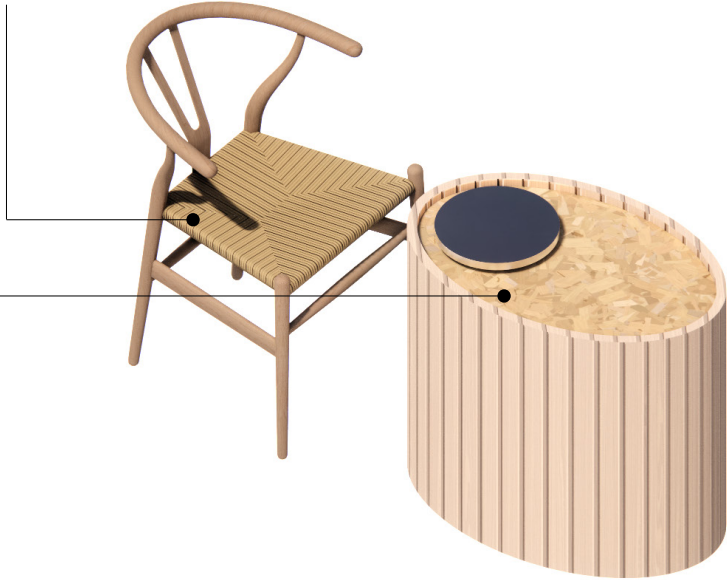
I integrated wooden panels running across the entire ceiling with intentional gaps between them, allowing lighting to filter through. This design choice was not only aesthetic but also functional. The gaps in the ceiling panels help diffuse sound, preventing harsh echoes and ensuring a more balanced acoustic environment. Since visually impaired individuals rely heavily on sound for navigation and communication, this setup enhances spatial awareness by reducing auditory distortions. The wooden material further softens noise, creating a warm and controlled atmosphere that fosters both focus and interaction.

Research : unpredictability in seating can be a major challenge

Requirement : control and focus

Furniture Features : stability and safety

I chose chairs with non-slip feet and weighted bases to prevent any unintended movement, ensuring a steady foundation for visually impaired users as they work



Brent Model #16, a highly regarded adaptive wheel known for its adjustable height and consistent speed control

Safety : I designed a custom wooden panel with a smooth, curved form to enclose the machine's moving parts

Features : prevents accidental contact and provides a tactile guide



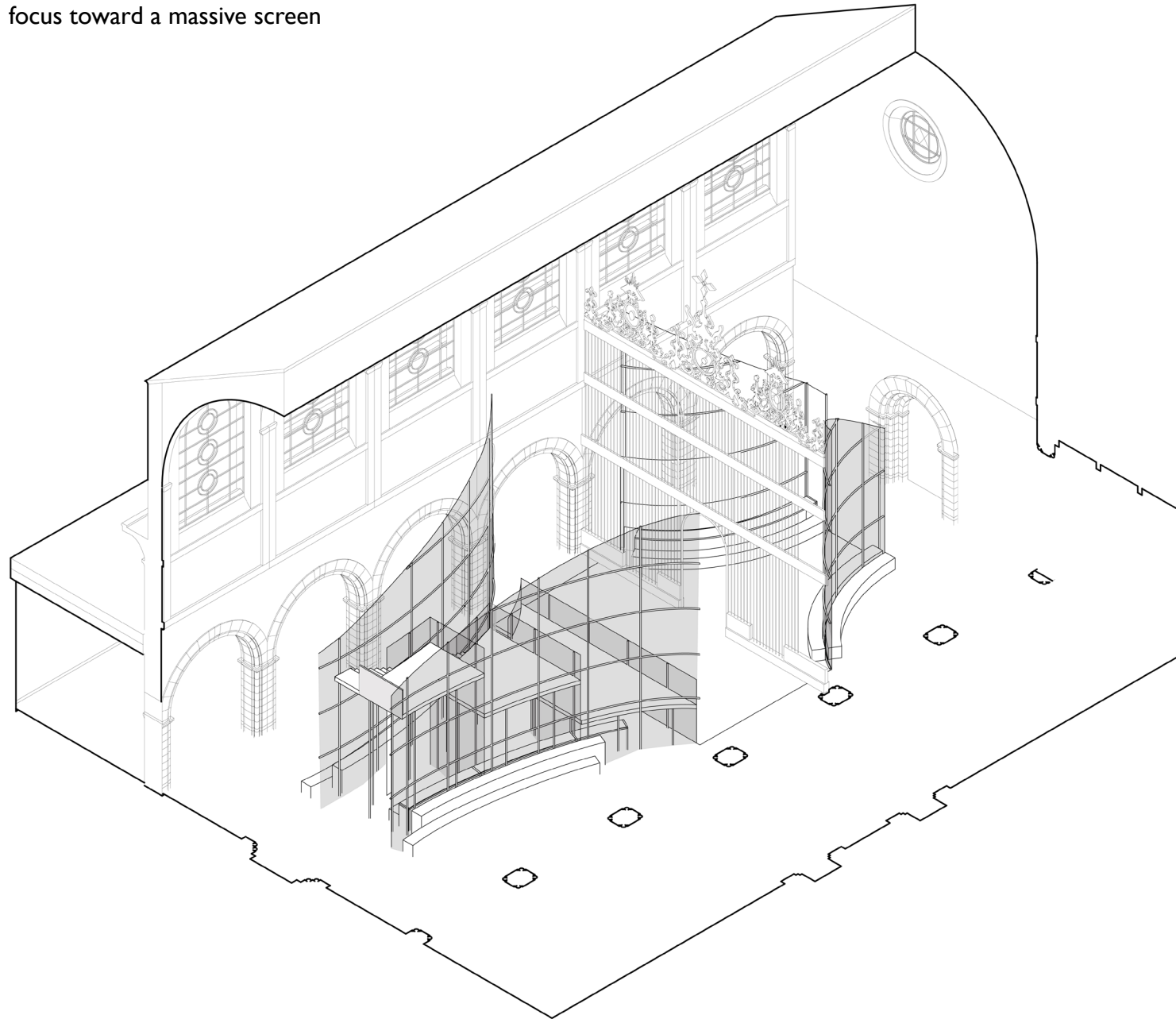
Skip Towel
Plaster in
Workspace

Straited Plaster
for easy
Navigation

FLOATING GRID

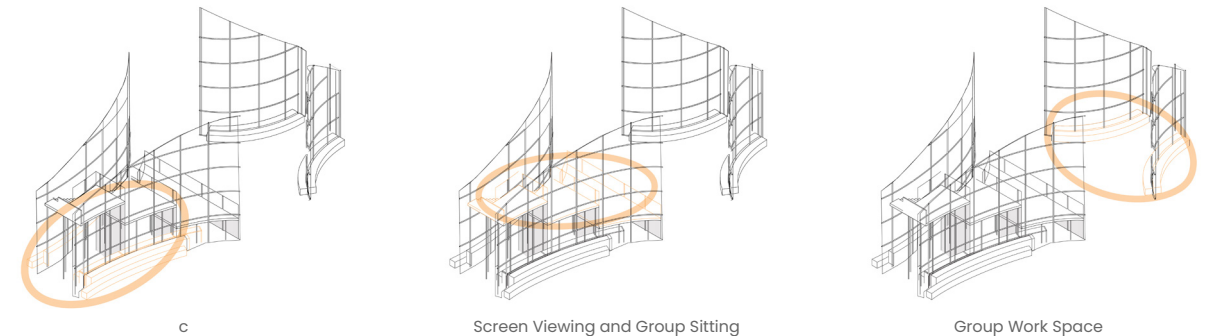
Rhode Island School of Design 2024 Fall | Advanced Studio II - Collectivememoryscapes | Instructor Alvaro Gomez

To design a pavilion that guides focus toward a massive screen



05

Transparency | Opacity | Structure | Lightness



This independent project explores the interplay of transparency and opacity within the context of the Medieval Sculpture Hall at the MET Museum. The challenge arose when, during a site visit, I noticed that visitors were treating the space as a transition zone merely, bypassing the large screen that dominates the room instead of stopping and looking at the screen's impressive mass.

To address this, I designed a pavilion that celebrates the verticality of the room while guiding the viewer's eye toward the screen. The pavilion uses transparent acrylic sheets intersected by steel beams, balancing openness with enclosure. It features a layered composition of clear and frosted materials, allowing for light to shift and play with spatial perception, enhancing the viewer's experience. From both the east and west entrances, where views across the room are obstructed, the pavilion directs attention to the screen, transforming it into the focal point of the space. The result is a dynamic and immersive environment that fosters both collaboration and focused work, while reshaping how visitors interact with this historically rich setting.

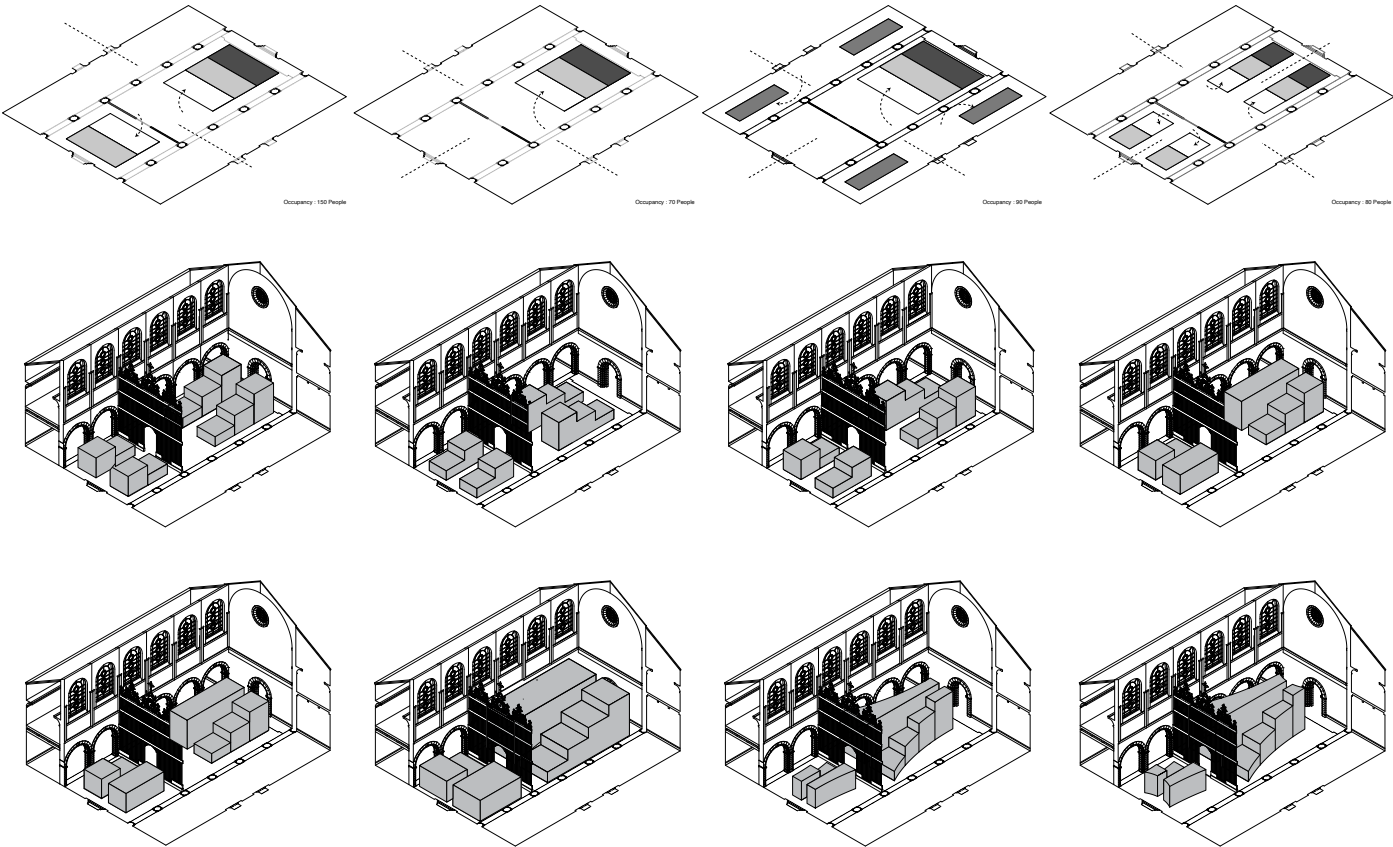
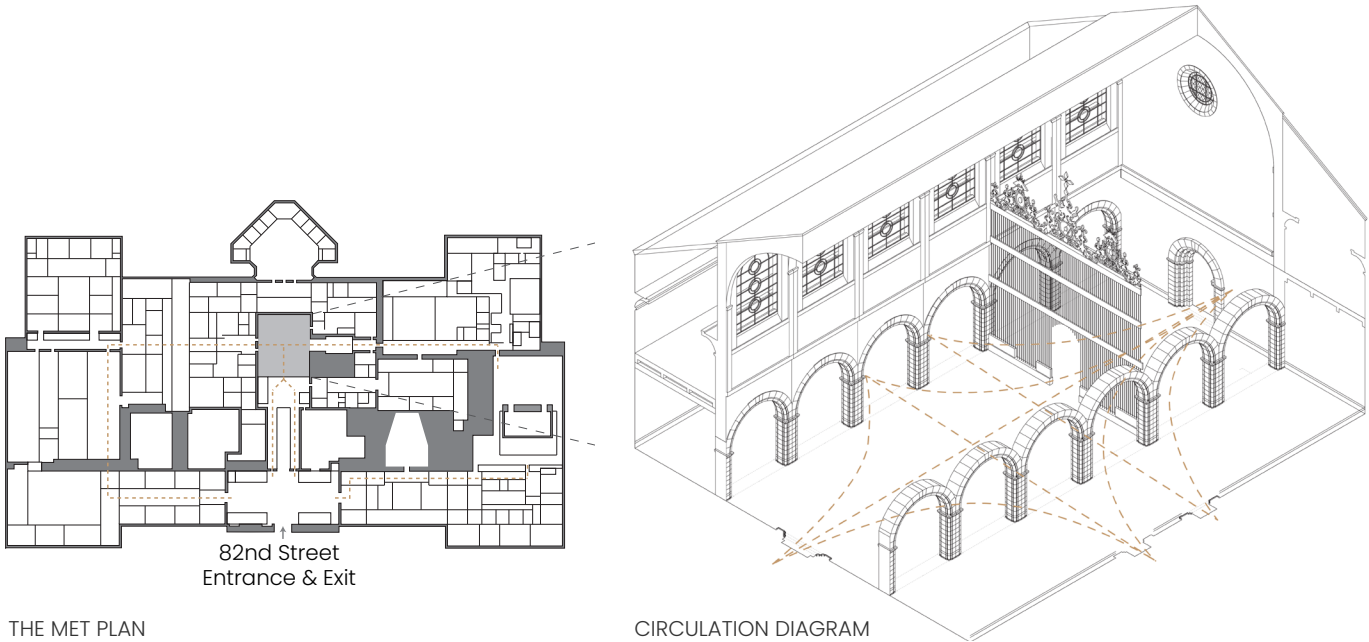
Strengths: Rhino, Enscape, AutoCAD, Material Exploration, User Experience, Pavilion Design, and Structural Construction

DEVELOPMENT



SITE :The Medieval Room at The MET

The Medieval Sculpture Hall at The Met Cloisters showcases medieval European art, with the Giant Choir Screen from the Cathedral of Valladolid acting as a focal point that divides the room into two uneven halves. Its intricate details enhance the space’s reverent atmosphere, guiding visitors while creating a dynamic interplay of light, shadow, and texture.



12 Iterations

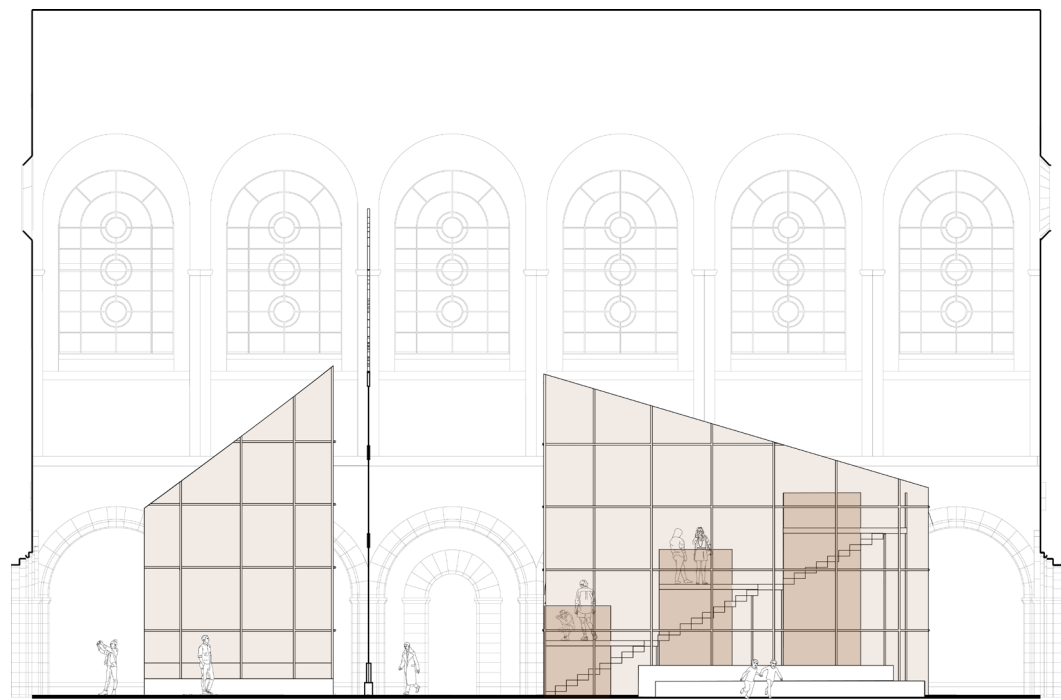
The design process involved 12 iterations focused on program developments, volume development, and development through relation to the site.



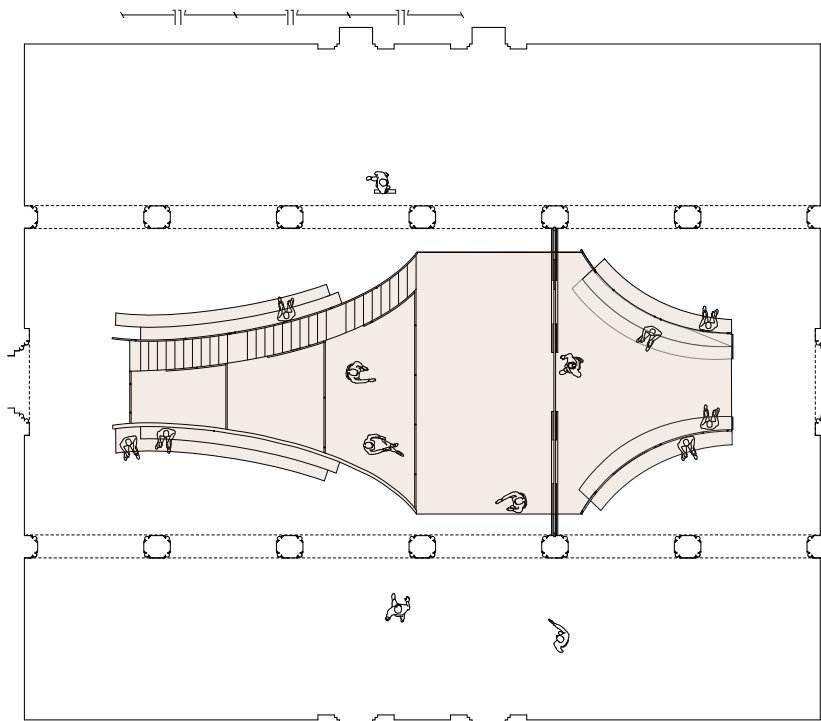
Scaled Physical Model

The physical model was constructed using wooden dowels to represent the structural framework, while cling film sheets were layered with glue to mimic the textured surface of acrylic panels, creating a tactile and visual representation of the pavilion's materiality. This helped me test the movement of the eye through the transparent sheets.

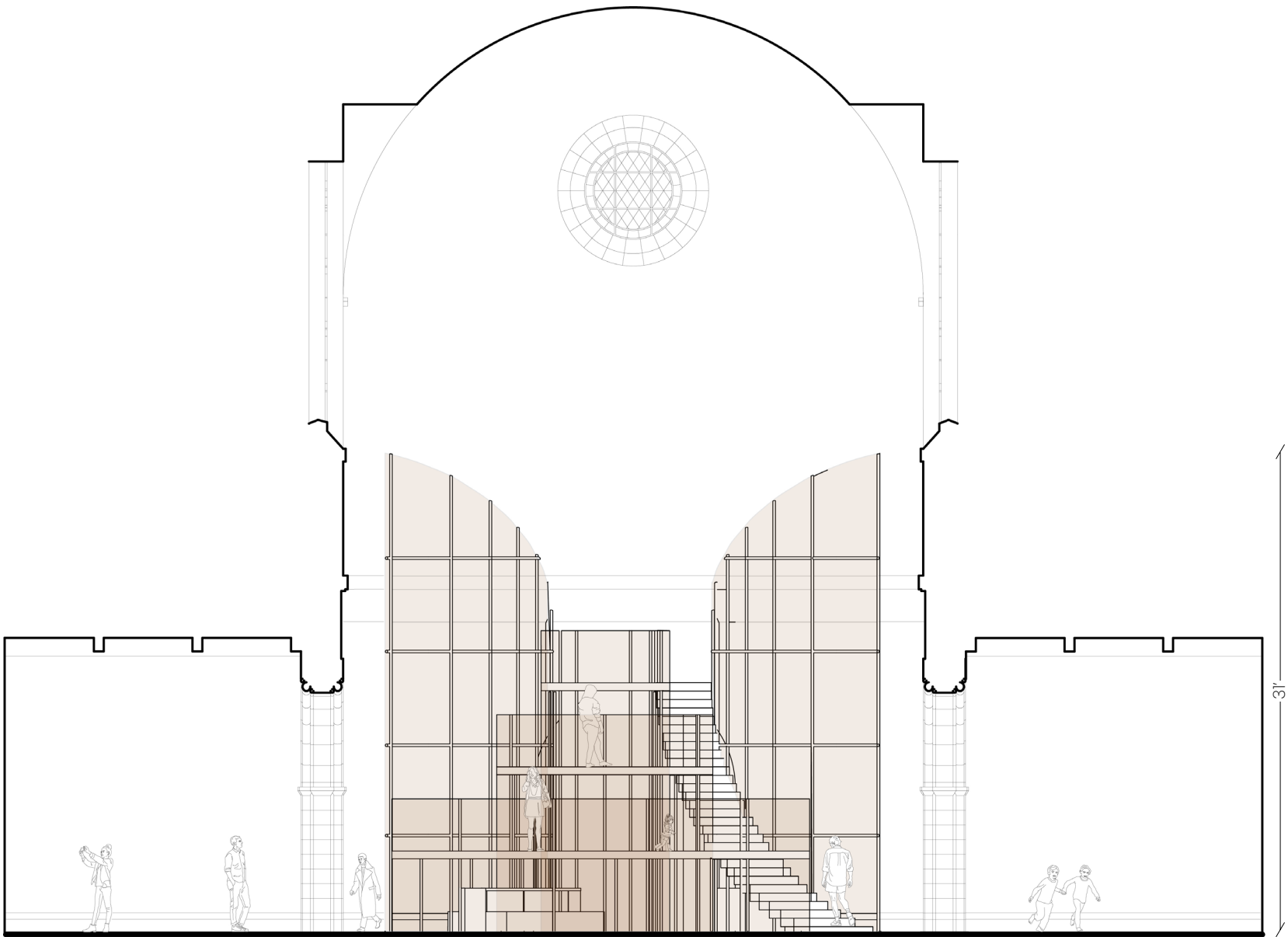
STRUCTURAL DRAWINGS



LONGITUDNAL SECTION



PLAN



CROSS SECTION

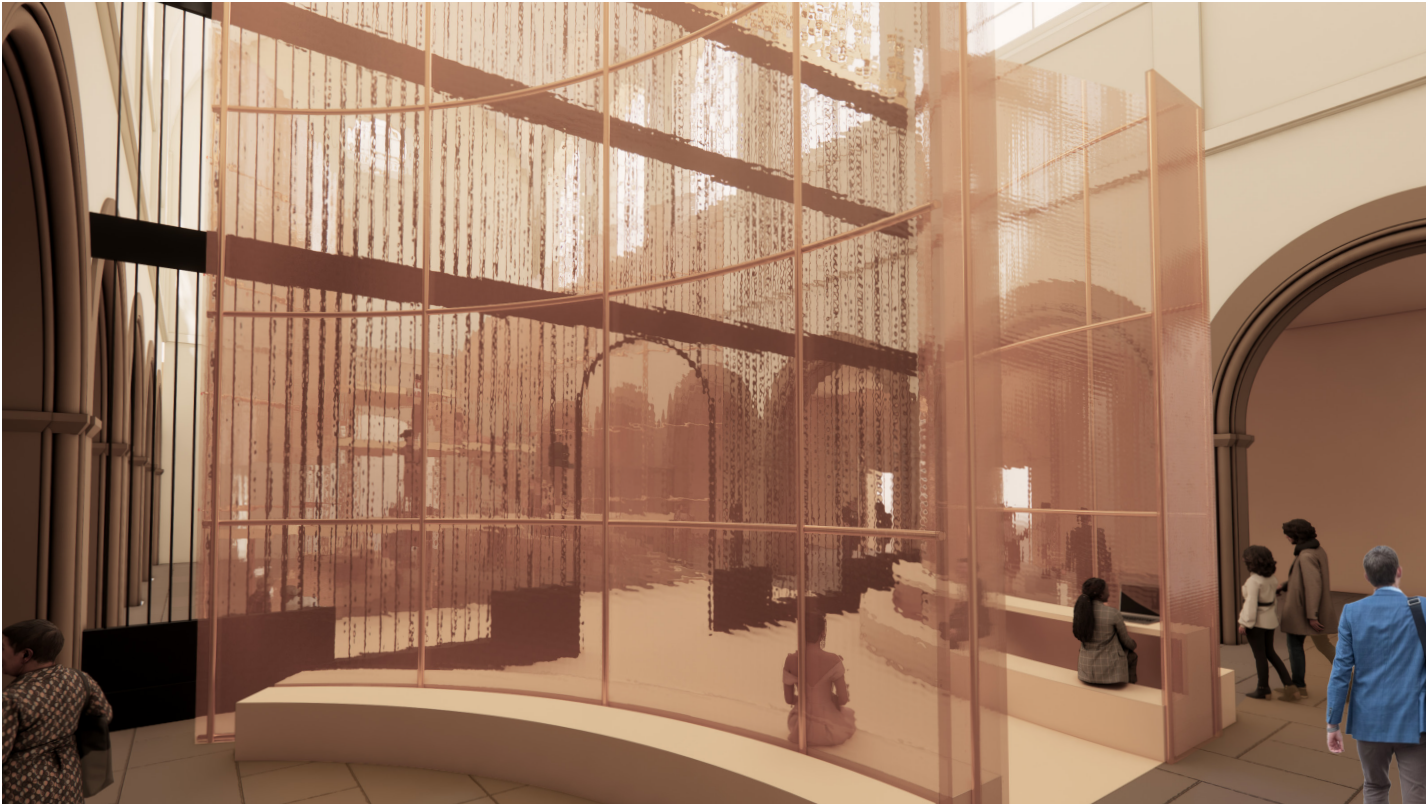
MATERIALS AND FINAL RENDERS



The pavilion’s material selection strikes a balance between lightness and strength, drawing inspiration from the existing beige walls and arched ceiling to match the ethos of the space. Transparent acrylic sheets maintain openness, ensuring unobstructed views from all angles, while steel beams provide structural support and contrast. By using lightweight and translucent materials, the structure enhances the surrounding architecture without imposing on it, resulting in a harmonious and adaptable environment that prioritizes both functionality and aesthetic appeal.



VIEWING SPACE – 11’ wide layered surfaces to view the screen from multiple levels



GROUP WORK SPACE – A collaborative space with acrylic enclosures, steel beams, and integrated seating and workspaces



INTEGRATED SPACE – A focused workspace beneath viewing space with seating and desks

The design balances transparency and opacity, creating a dynamic interplay between openness and enclosure. Transparent acrylic sheets define the pavilion, allowing visibility and light to pass through while maintaining a sense of separation. Steel beams run through the structure, adding a rhythmic, industrial element that contrasts with the lightness of the acrylic.

BOATHOUSE CAFE

Rhode Island School of Design 2023 Spring | Introduction to Interior Design II | Instructor Elizabeth Debs

To transform a Boathouse into a sustainable,
Sail inspired Waterfront Cafe



This independent project transforms a former boat storage space into a Boat House Café, preserving its original architecture while integrating the concept of sailing into the design. Inspired by a ship’s hull, the structure features sails on the ceiling. The café extends outdoors with custom designed seating and a plaza with sail-like structures for shade and visual interest.

Owned by a middle-aged couple, the boathouse was once a gathering spot for summer sailing and fishing. Now, they aim to revitalize its left wing into a café serving coffee, breakfast, and hosting gatherings while maintaining sailing activities to attract tourists. A pickup window ensures quick service without indoor entry.

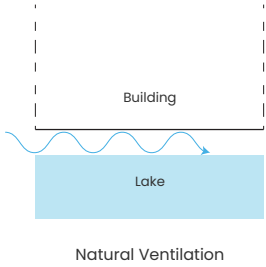
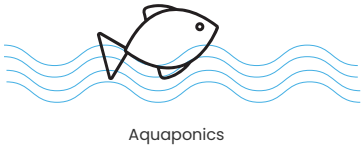
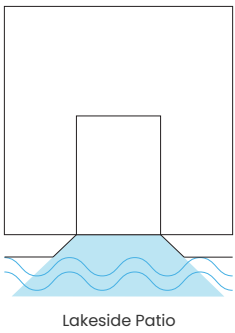
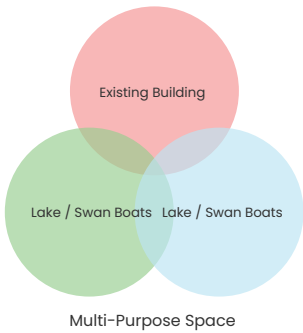
With Roger Williams Park’s greenery surrounding the site, I proposed an additional revenue stream by selling potted plants displayed across the café, enhancing its lush atmosphere. Sustainability was a key focus—existing architectural elements, including walls and ceilings, were retained, and old boat sails were re-purposed to rejuvenate the space.

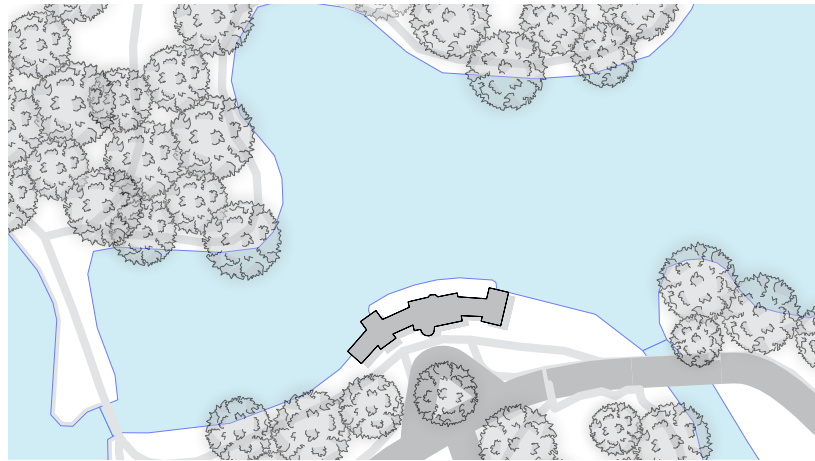
We met with the clients to understand their vision, then developed and presented the final proposal, ensuring the design honored the site’s history while embracing its new purpose.

Strengths: Rhino, Enscape, AutoCAD, Adobe Suite, Sustainable Design, Client Relationship, Revenue Generation, and Material Studies

06

Sustainable, Sculptural, Dynamic





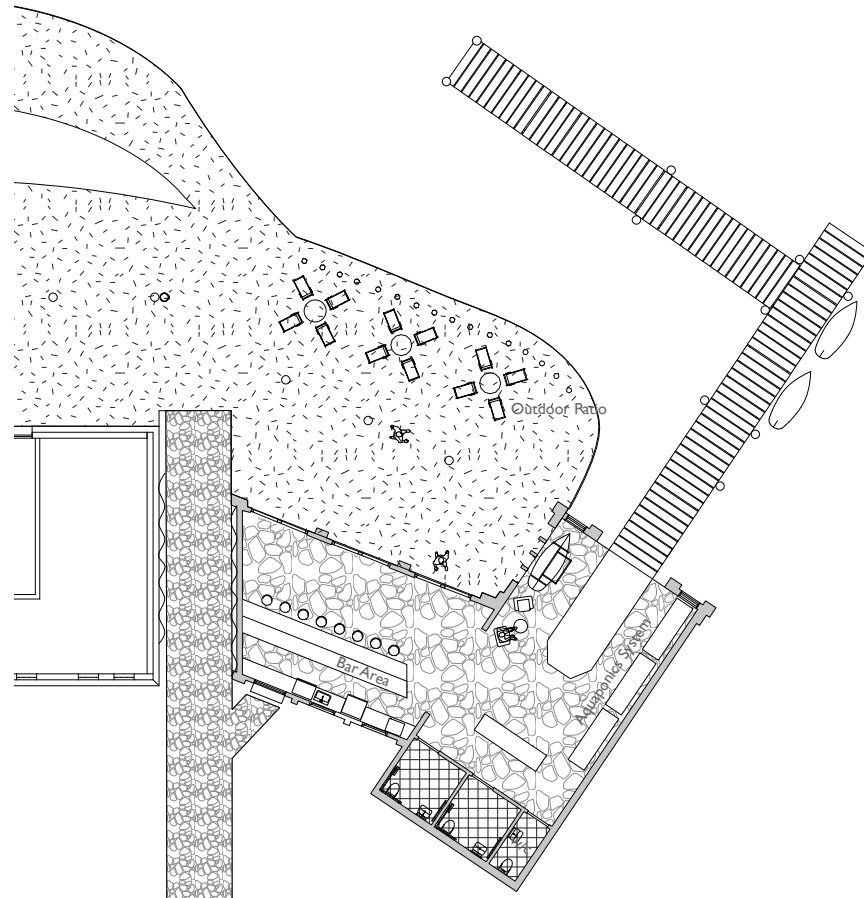
1000 Elmwood Ave, Providence, RI 02907

Site Analysis and Existing Conditions
 Located in Roger Williams Park, 1000 Elmwood Ave sits in a mixed-use area with residential, commercial, and cultural spaces. Well-connected by Elmwood Avenue and public transit, the site offers accessibility but requires weather-adaptive design. Its proximity to green spaces supports biophilic design, making natural materials, indoor-outdoor transitions, and community-focused seating ideal.

PLAN

The café opens to a lakeside patio, creating a direct connection between the indoor space and the water. Entry leads to the counter and bar area, with clear views toward the lake.

An adjacent service zone includes restrooms, a plant retail area, and an aquaponics system that sustains the plants and helps filter lake water. The layout is simple and linear, promoting flow, visibility, and connection to nature.



AQUAPONICS SYSTEM

A small portion of the lake enters the structure AS a docking space, forming the starting point for a closed-loop aquaponics system that nourishes the plants integrated throughout the café.

As water is drawn in, fish waste is naturally filtered through a system of plant beds. Beneficial bacteria convert the waste into nutrients, which the plants absorb. The purified water is then circulated back into the lake, completing a sustainable cycle. This system supports continuous drip irrigation, reduces manual labor, and cools the interior through natural ventilation.

Aquaponics System Flow:

1. Water Intake –

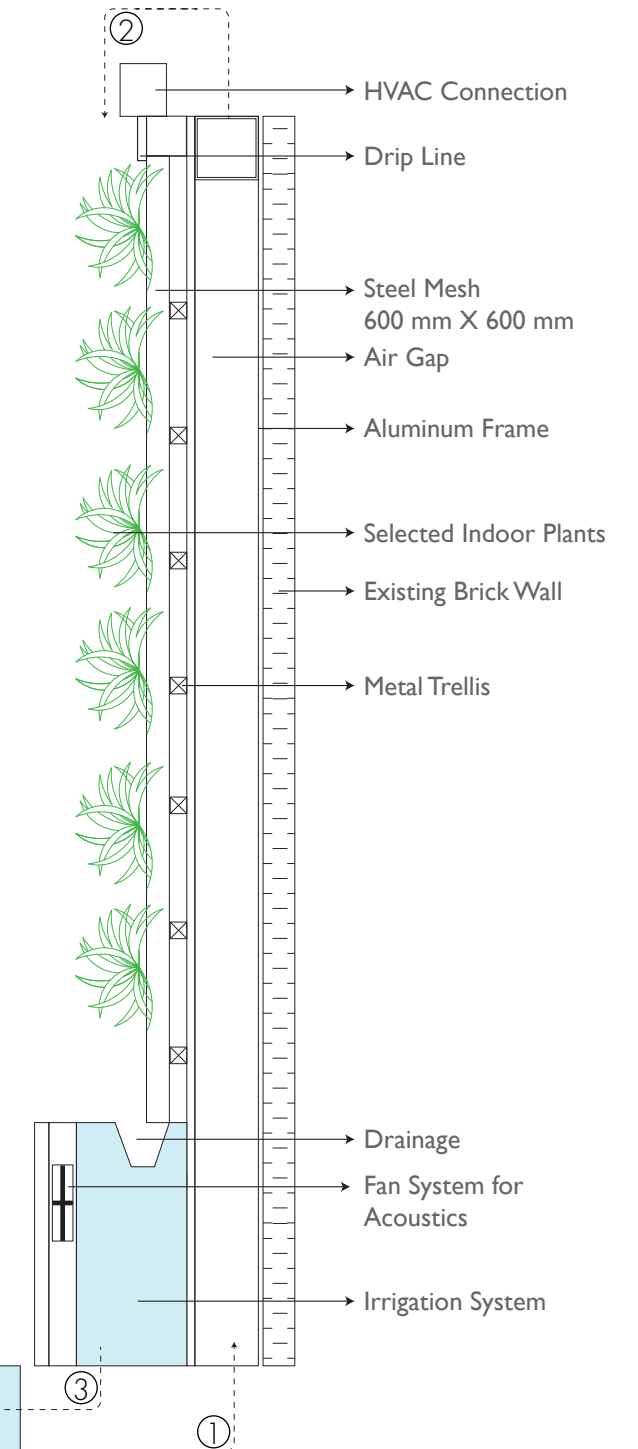
Water is gently drawn from the lake into the café's system.

2. Plant Nourishment –

Through drip irrigation, this water nourishes the plants. Beneficial bacteria in the soil naturally convert fish waste (ammonia and nitrites) into nitrates, which act as plant food.

3. Water Return –

As the plants absorb nutrients, the water is filtered and cleaned before being returned back to the lake, completing a sustainable cycle.





PLANTING SPACE –A cozy, nature-infused seating area with lush greenery, and elegant wooden accents. People can pick and buy planters from here.



CAFE SPACE – Blends industrial and organic aesthetics, featuring suspended greenery, and a patterned accent wall for a refreshing and inviting ambiance.



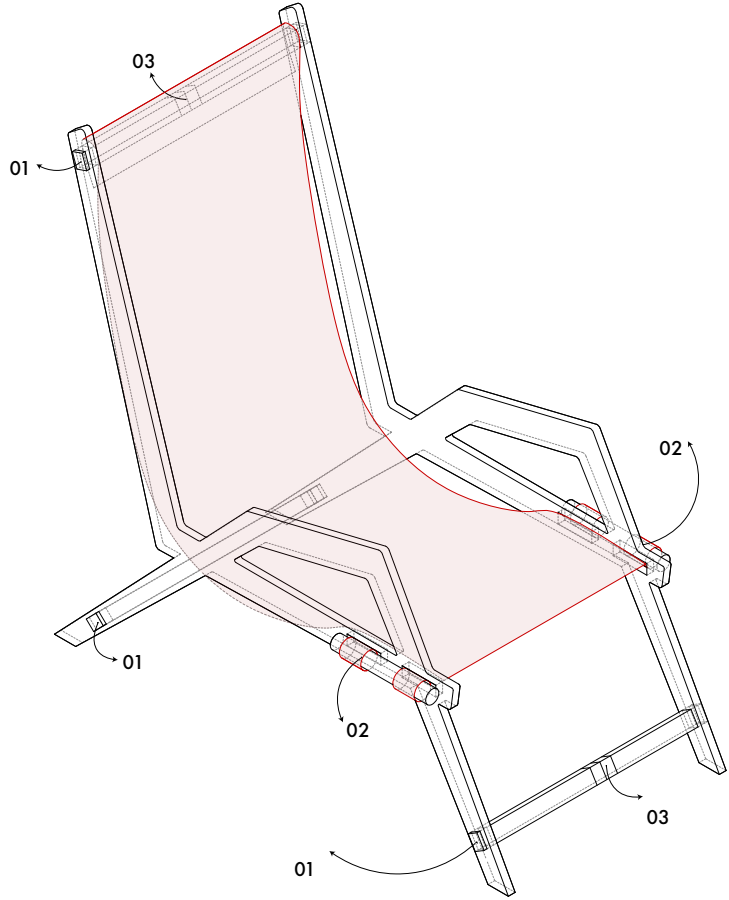
SECTION PERSPECTIVE



MATERIAL PALETTE

1. Red Brick Walls
2. Recycled Wood Panels from Old Boats for Table
- 3.Transparent Sail Canopy for Soft Diffused Light
4. Lush Green Vines and Indoor Plants
- 5.Wicker and Wooden Furniture with Organic Forms
6. Green and Black Textured Upholstery

OUTDOOR PATIO CHAIR DESIGN

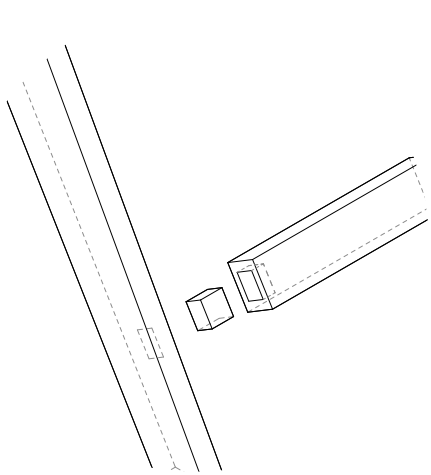


I designed and constructed a foldable outdoor chair for the Café’s outdoor patio. The chair features a sturdy wooden frame and a removable fabric seat, secured with titch buttons at the back and wrapped around detachable dowels on the sides. The removable cloth is designed to be easily cleaned. The chair is designed to collapse flat for easy storage, blending functionality with a lightweight, adaptable design.

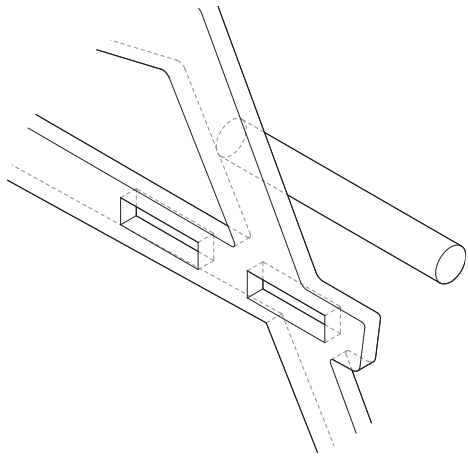
To test the concept, I made the chair myself using wood and cloth in the wood shop to ensure its workability since I believe that all things should be prototype tested.



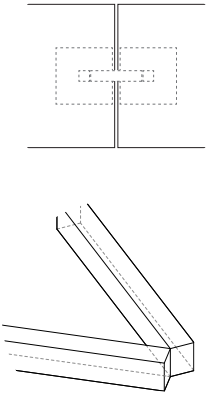
Chairs used in the Outdoor Patio



01. Mortise and Tenon Joint



02. Cloth wraps around the Dowel



03. Butt Hinge to make it Foldable



Removable Dowels



Easy to remove Cloth



Titch Button Joinery at the Back

LUMINOUS FLOW

Rhode Island School of Design 2024 Winter | Working with Veneer | Instructor Dotan Appelbaum



07

Veneer Work | Wood Work

Chai has always been my quiet companion, fueling my thoughts as I create. One evening, as I dipped a cookie into my cup, a broken edge caught my eye—what if that moment could glow beside me? I sketched a base shaped like a *chai* cup, grounding and familiar, with the cookie’s jagged edge woven into the design. I wanted the lamp to feel like home—warm, textured, and deeply personal. Crafted from layered veneer, it plays with light and shadow, reflecting my love for wood. That love began the moment I stepped into the RISD wood shop. I spent countless hours there, not just for classes but out of pure passion. As a shop monitor, guiding others only deepened my connection to the craft. This lamp is a reflection of that journey—of *chai*, of wood, and the quiet moments that spark creativity.

Strengths: Wood working, Veneer Knowledge, Craftsmanship, CNC Machine, Wood shop tool, Band saw, Wood Joinery



Lamp Glowing by my Workstation



Intricately Designed Wire Outlet

CRAFTED CONTRASTS

Rhode Island School of Design 2024 Winter | Working with Veneer | Instructor Dotan Appelbaum

Veneer Work | Wood Work



Intricate Veneer Work on the Table Top Inspired by Rangoli



Waterfall Joint joining 2 halves at the joint



Leg made using Lathe Machine, inspired by Modern Design

As a child, I'd watch my mom create intricate *rangoli* patterns during Diwali, completely in awe of how tradition took shape in front of me. Those moments stayed with me, and I wanted to capture that feeling in something lasting. That's how this table design was born—a blend of tradition and modern simplicity. I shaped the top as a meeting point between a circle, like the *rangolis* I grew up with, and a structured square, bringing in a contemporary touch. The base, inspired by vintage chair legs, grounds the design with a sense of history. Using modern techniques, I crafted each detail to make sure the table felt both familiar and new—something that honors where I come from while fitting effortlessly into today's spaces.

Strengths: Wood working, Veneer Knowledge, Craftsmanship, CNC Machine, Wood shop tool, Band saw, Lathe Machine, Wood Joinery



Pen on Paper, Section Perspective of Agri Chapel by Yu Momoeda Architecture | Fall 2022

KAAVYA GOEL

kgoel@risd.edu | goelkaavya@gmail.com
+1 (516) 225 - 2507 | +91 9999740303